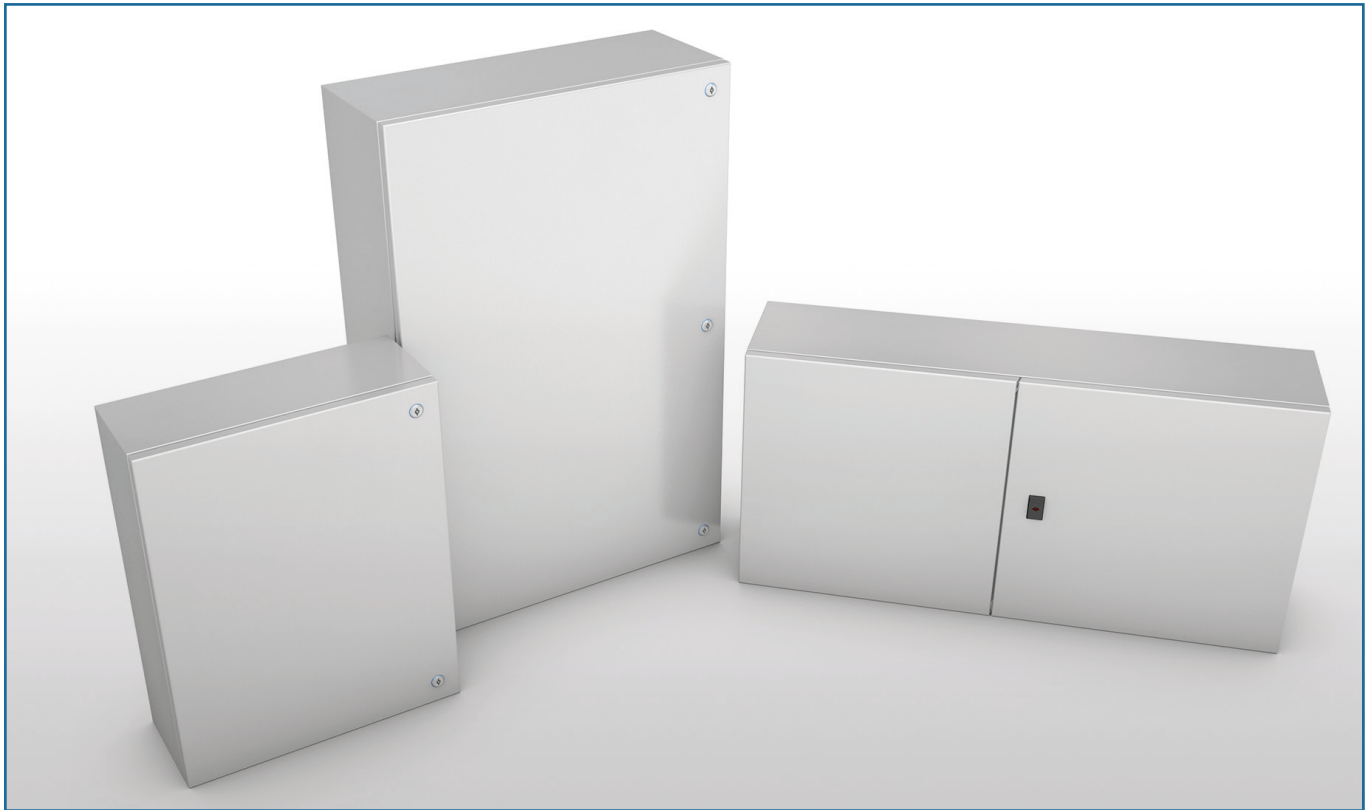


PRODUCT	PAG.
SMALL CABINETS	
Small cabinets QL	84
Small cabinets QV	86
Small cabinets QLP	88
Small cabinets QVP	90
Small cabinets QLSE	92
Small cabinets QS	94
Small cabinets QM	96
Accessories for small cabinets	98

3

**SMALL CABINETS**

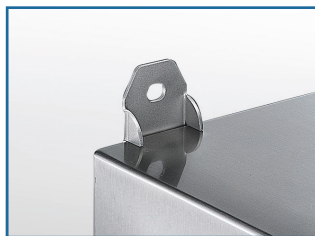
## SMALL CABINETS



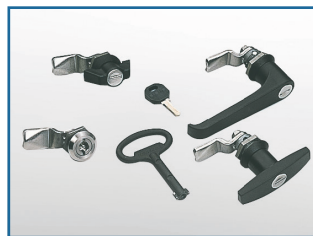
INSIDE DOORS



WALL FIXING LUGS



DOOR LOCKS



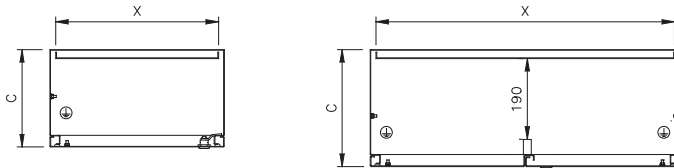
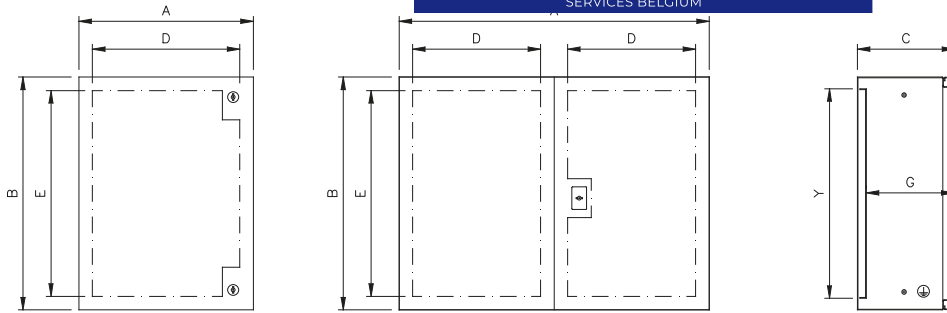
ANTI-CLOSE DEVICE



### SMALL CABINETS QL

- Material: EN 1.4307 (TYPE 304L) or EN 1.4404 (TYPE 316L) s/s, finely satin-finished scotch brite and protected on 1 side.
- Enclosure obtained from a single sheet by multi-bend shaping of the enclosure front edge.
- Fairlead plate not provided.
- Full door.
- Doorlock with twin-comb mapping, standardized type  $\varnothing 3$  for Low Tension, s/s outside.
- S/s inner hinges, 120° opening according to CEI EN 60204-1 recommendations.
- Maximum weight admissible on the door: 12 kg.
- Seal of foamed polyurethane or silicone.
- Inner plate of sendzimir EN 10142 galvanized sheet, secured to the bottom of the cabinet by s/s M8 threaded bolts delivered with the cabinet.
- Pre-arranged for earthing as per applicable regulations.
- Protection degree: IP66 and IP69K for one-door cabinets; IP65 for two-door cabinets.
- Back: prearranged with four inserts M6 for wall mount system.





Tested by <b>KEMA</b> Quality Italy	<b>IP69K</b>	<b>IP66</b>	EN 60 529
<b>UL</b> US LISTED FILE N° E237618	<b>TYPE NEMA 4X, 4, 12, 1</b>		Standard UL508A - UL50 Standard 250
<b>CE</b>	<b>IK10</b>		EN 60204-1 89/392/EEC

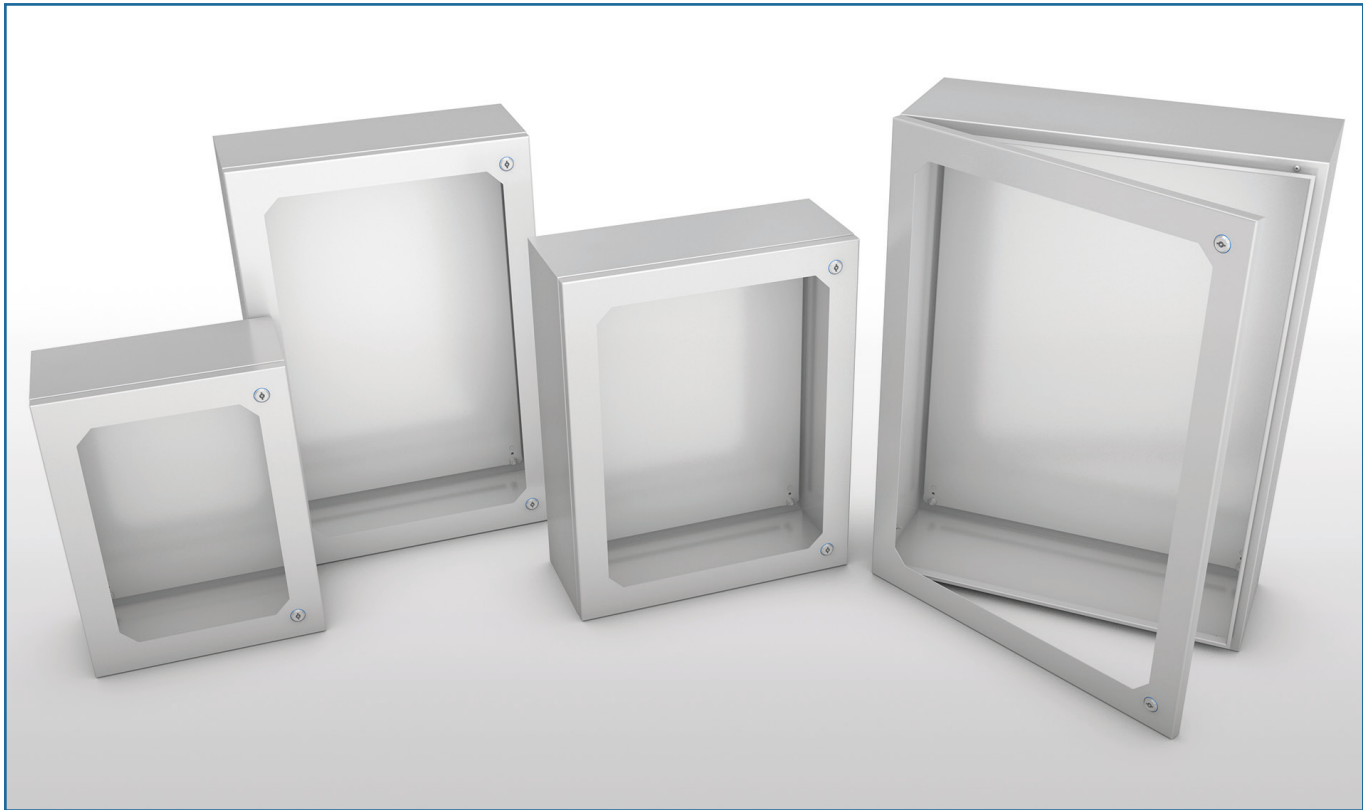
Detailed drawings per each cabinet can be downloaded from our site [www.ilinox.com](http://www.ilinox.com)

ITEM	OUTSIDE SIZES			DOOR USEFUL SURFACE		USEFUL DEPTH	MATERIAL		THICKNESS		INNER PLATE	
	A	B	C	D	E	G	GASKET	SMALL CABINET	ENCLOSURE	DOOR	X	Y
QL23/304	200	300	150	130	230	130	polyurethane	Type 304L	1,2 mm	1,5 mm	170	240
QL33/304	300	300	180	230	230	160	polyurethane	Type 304L	1,2 mm	1,5 mm	270	240
QL34/304	300	450	200	230	380	180	polyurethane	Type 304L	1,2 mm	1,5 mm	270	390
QL36/304	300	600	250	230	530	230	polyurethane	Type 304L	1,2 mm	1,5 mm	270	540
QL43/304	450	300	200	380	230	180	polyurethane	Type 304L	1,2 mm	1,5 mm	420	240
QL44/304	450	450	200	380	380	180	polyurethane	Type 304L	1,2 mm	1,5 mm	420	390
QL46/304	450	600	250	380	530	230	polyurethane	Type 304L	1,2 mm	1,5 mm	420	540
QL46P/304	450	600	400	380	530	380	polyurethane	Type 304L	1,5 mm	1,5 mm	420	540
QL64/304	600	450	250	530	380	230	polyurethane	Type 304L	1,2 mm	1,5 mm	570	390
QL66/304	600	600	250	530	530	230	polyurethane	Type 304L	1,2 mm	1,5 mm	570	540
QL66P/304	600	600	300	530	530	280	polyurethane	Type 304L	1,2 mm	1,5 mm	570	540
QL66P4/304	600	600	400	530	530	380	polyurethane	Type 304L	1,5 mm	1,5 mm	570	540
QL67/304	600	750	250	530	680	230	polyurethane	Type 304L	1,5 mm	2 mm	570	690
QL68P/304	600	800	400	530	730	380	polyurethane	Type 304L	1,5 mm	2 mm	570	740
QL69/304	600	900	250	530	830	230	polyurethane	Type 304L	1,5 mm	2 mm	570	840
QL77/304	750	750	300	680	680	280	polyurethane	Type 304L	1,5 mm	2 mm	720	690
QL710/304	750	1000	300	680	930	280	polyurethane	Type 304L	1,5 mm	2 mm	720	940
QL812/304	800	1200	320	600	1080	300	polyurethane	Type 304L	1,5 mm	2 mm	770	1140
QL86/304	800	600	300	730	530	280	polyurethane	Type 304L	1,5 mm	2 mm	770	540
QL106/304	1000	600	300	930	530	280	polyurethane	Type 304L	1,5 mm	2 mm	970	540
QL107A/304	1000	750	300	430	680	280	polyurethane	Type 304L	1,5 mm	2 mm	970	690
QL126A/304	1200	600	300	530	530	280	polyurethane	Type 304L	1,5 mm	2 mm	1170	540
QL33S/316	300	300	180	230	230	160	silicone	Type 316L	1,5 mm	1,5 mm	270	240
QL34S/316	300	450	200	230	380	180	silicone	Type 316L	1,5 mm	1,5 mm	270	390
QL36S/316	300	600	250	230	530	230	silicone	Type 316L	1,5 mm	1,5 mm	270	540
QL43S/316	450	300	200	380	230	180	silicone	Type 316L	1,5 mm	1,5 mm	420	240
QL44S/316	450	450	200	380	380	180	silicone	Type 316L	1,5 mm	1,5 mm	420	390
QL46S/316	450	600	250	380	530	230	silicone	Type 316L	1,5 mm	1,5 mm	420	540
QL64S/316	600	450	250	530	380	230	silicone	Type 316L	1,5 mm	1,5 mm	570	390
QL66S/316	600	600	250	530	530	230	silicone	Type 316L	1,5 mm	1,5 mm	570	540
QL67S/316	600	750	250	530	680	230	silicone	Type 316L	1,5 mm	2 mm	570	690
QL69S/316	600	900	250	530	830	230	silicone	Type 316L	1,5 mm	2 mm	570	840
QL77S/316	750	750	300	680	680	280	silicone	Type 316L	1,5 mm	2 mm	720	690
QL710S/316	750	1000	300	680	930	280	silicone	Type 316L	1,5 mm	2 mm	720	940

NOTE: QL33 - QL34 - QL43 : one only doorlock - QL812 : three doorlocks  
QL107A/304 - QL126: two doors without central upright

Protezione IK10 solo per armadietti porta singola  
UL certification to be requested with the order

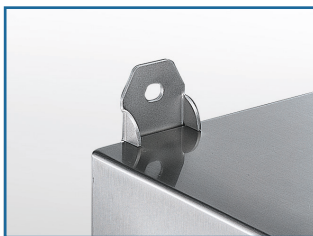
## SMALL CABINETS



RAIN PROTECTIONS



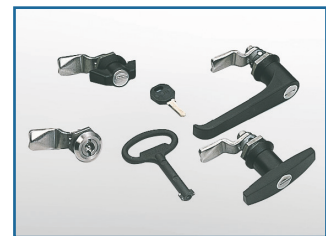
WALL FIXING LUGS



GAS-OPERATED SPRINGS



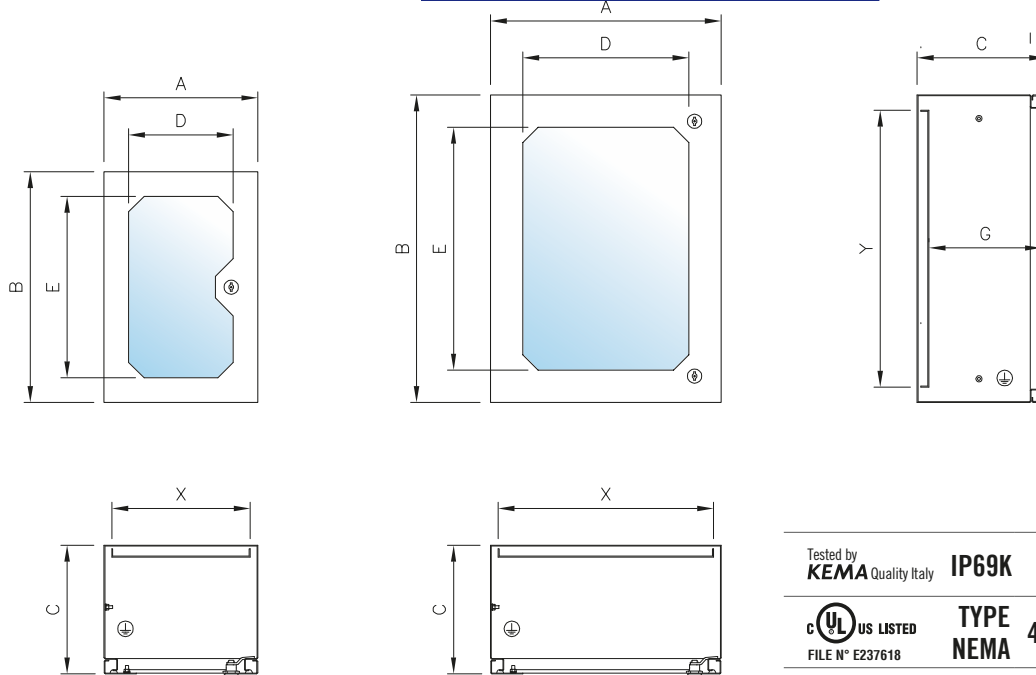
DOOR LOCKS



### SMALL CABINETS QV

- Material: EN 1.4307 (TYPE 304L) or EN 1.4404 (TYPE 316L) s/s, finely satin-finished and protected on one side.
- Enclosure obtained from a single sheet shaped by multi-bending of the envelope front edge.
- Fairlead plate : not provided.
- Door with 3+3-layer shatterproof glass (compliant with the applicable accident-prevention regulations).
- The sight glass is made of polycarbonate for models QV33-QV34-QV43.
- Doorlock: twin-comb, standardized type Ø 3 for Low Tension; outside parts made of s/s.
- Inner hinges made of s/s: 120° opening according to VDI 3231 recommendations.
- Seal of foamed polyurethane or silicone.
- Inner plate made of sendzimir EN 10142 galvanized sheet, secured to the bottom of the cabinet by s/s threaded pins M8, delivered with the cabinet.
- Pre-arranged for earthing as per applicable rules.
- Protection degree: IP66 and IP69K.
- Back prearranged with four inserts M6 for wall mount system.





Tested by **KEMA** Quality Italy **IP69K** **IP66** EN 60 529

**UL** US LISTED **TYPE NEMA 4X, 4, 12, 1** Standard UL508A - UL50 Standard 250  
FILE N° E237618

**CE** EN 60204-1 89/392/EEC

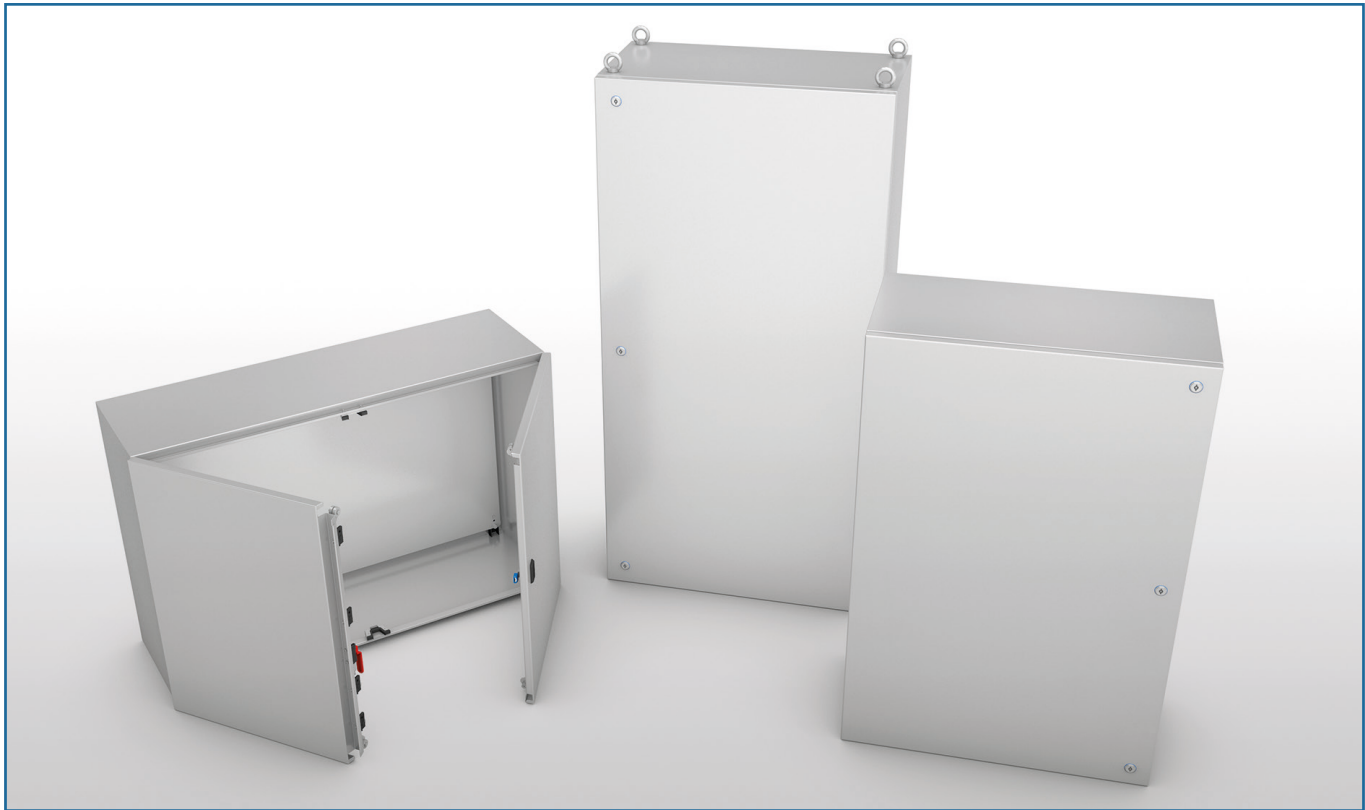
Detailed drawings per each cabinet can be downloaded from our site [www.ilinox.com](http://www.ilinox.com)

ITEM.	OUTSIDE SIZES			DOOR VISIBLE		USEFUL DEPTH	MATERIAL		THICKNESS		INNER PLATE	
	A	B	C	D	E	G	GASKET	SMALL CABINET	ENCLOSURE	DOOR	X	Y
QV33/304	300	300	180	204	204	157	polyurethane	Type 304L	1,2 mm	1,5 mm	270	240
QV34/304	300	450	200	204	354	177	polyurethane	Type 304L	1,2 mm	1,5 mm	270	390
QV36/304	300	600	250	204	504	227	polyurethane	Type 304L	1,2 mm	1,5 mm	270	540
QV43/304	450	300	200	354	204	177	polyurethane	Type 304L	1,2 mm	1,5 mm	420	240
QV44/304	450	450	200	324	324	173	polyurethane	Type 304L	1,2 mm	1,5 mm	420	390
QV46/304	450	600	250	324	474	223	polyurethane	Type 304L	1,2 mm	1,5 mm	420	540
QV46P/304	450	600	400	380	530	380	polyurethane	Type 304L	1,5 mm	1,5 mm	420	540
QV64/304	600	450	250	474	324	223	polyurethane	Type 304L	1,2 mm	1,5 mm	570	390
QV66/304	600	600	250	474	474	223	polyurethane	Type 304L	1,2 mm	1,5 mm	570	540
QV66P4/304	600	600	400	474	474	380	polyurethane	Type 304L	1,5 mm	1,5 mm	570	540
QV67/304	600	750	250	474	624	223	polyurethane	Type 304L	1,5 mm	2 mm	570	690
QV68P/304	600	800	400	474	674	380	polyurethane	Type 304L	1,5 mm	2 mm	570	740
QV69/304	600	900	250	474	774	223	polyurethane	Type 304L	1,5 mm	2 mm	570	840
QV77/304	750	750	300	624	624	273	polyurethane	Type 304L	1,5 mm	2 mm	720	690
QV710/304	750	1000	300	624	874	273	polyurethane	Type 304L	1,5 mm	2 mm	720	940
QV812/304	800	1200	320	650	1075	293	polyurethane	Type 304L	1,5 mm	2 mm	770	1140
QV33S/316	300	300	180	204	204	157	silicone	Type 316L	1,5 mm	1,5 mm	270	240
QV34S/316	300	450	200	204	354	177	silicone	Type 316L	1,5 mm	1,5 mm	270	390
QV36S/316	300	600	250	204	504	227	silicone	Type 316L	1,5 mm	1,5 mm	270	540
QV43S/316	450	300	200	354	204	177	silicone	Type 316L	1,5 mm	1,5 mm	420	240
QV44S/316	450	450	200	324	324	173	silicone	Type 316L	1,5 mm	1,5 mm	420	390
QV46S/316	450	600	250	324	474	223	silicone	Type 316L	1,5 mm	1,5 mm	420	540
QV64S/316	600	450	250	474	324	223	silicone	Type 316L	1,5 mm	1,5 mm	570	390
QV66S/316	600	600	250	474	474	223	silicone	Type 316L	1,5 mm	1,5 mm	570	540
QV67S/316	600	750	250	474	624	223	silicone	Type 316L	1,5 mm	2 mm	570	690
QV69S/316	600	900	250	474	774	223	silicone	Type 316L	1,5 mm	2 mm	570	840
QV77S/316	750	750	300	624	624	273	silicone	Type 316L	1,5 mm	2 mm	720	690
QV710S/316	750	1000	300	624	874	273	silicone	Type 316L	1,5 mm	2 mm	720	940

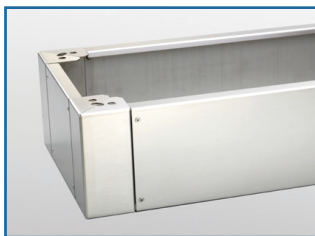
NOTE: QV33 - QV34 - QV43 : one central doorlock, portlight made of polycarbonate 3mm thick.  
QV812 : three doorlocks

UL certification to be requested with the order

## SMALL CABINETS



SKIRTING



PEDESTALS



OVERDOORS



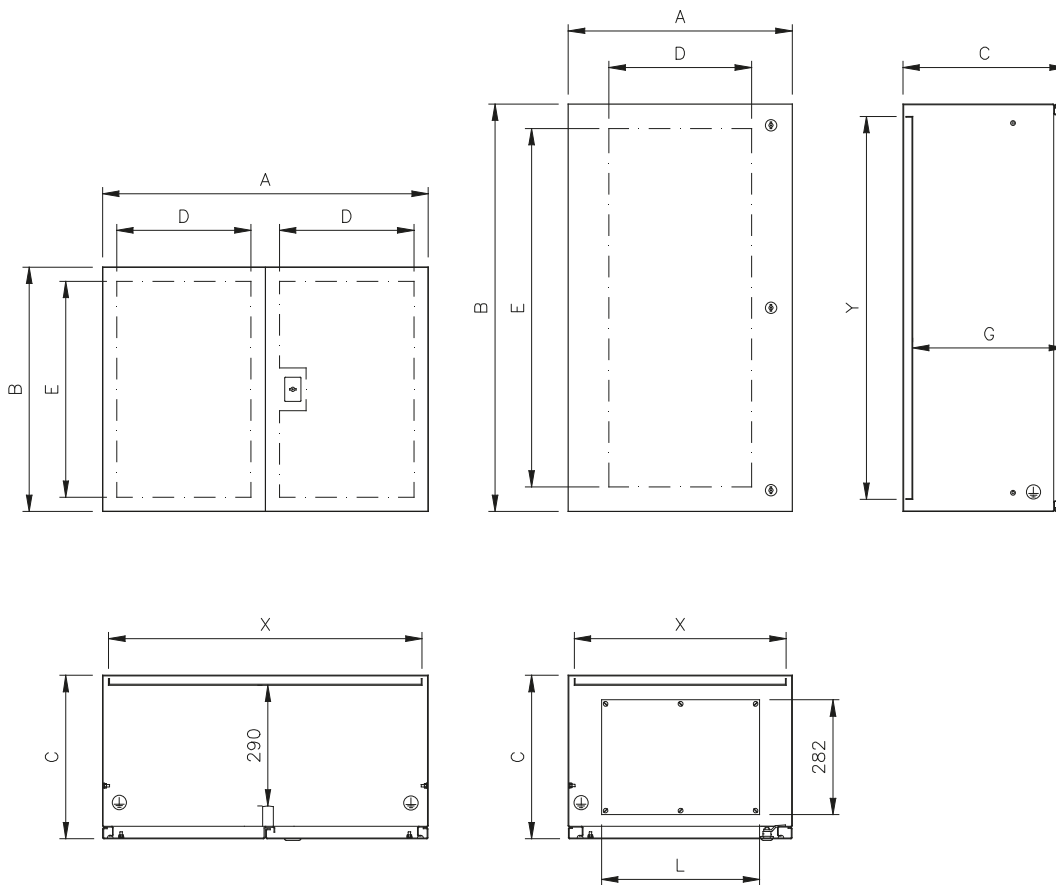
ANTI-CLOSE DEVICE



### SMALL CABINETS QLP

- Material: EN 1.4307 (TYPE 304L) s/s, satin-finished scotch brite and protected on one side.
- Enclosure obtained from a single sheet, shaped by multi-bending of the envelope front edge.
- Fairlead plate with seal (only for cabinets H1200 - H1600).
- Reversible full door.
- Doorlock: twin-comb type standardized type,  $\varnothing$  3 for Low Tension, s/s outside.
- S/s inner hinges: 120° opening as per CEI EN 60204-1 recommendations.
- Seals of foamed polyurethane.
- Inner plate made of sendzimir EN 10142 galvanized sheet secured to the bottom of the enclosure by M8 threaded pins delivered with the plate.
- Pre-arrangement for earthing as per applicable rules.
- Protection degree IP66 and IP69K for one-door cabinets, IP65 for two-door cabinets.
- Back: prearranged with four inserts M8 for wall mount system.





Tested by **KEMA** Quality Italy **IP69K** **IP66** EN 60 529

**UL** US LISTED **TYPE NEMA 4X, 4, 12, 1** Standard UL508A - UL50 Standard 250  
FILE N° E237618

**CE** **IK10** EN 60204-1 89/392/EEC

Detailed drawings per each cabinet can be downloaded from our site [www.ilinox.com](http://www.ilinox.com)

ITEM	OUTSIDE SIZES			DOOR USEFUL SURFACE		USEFUL DEPTH	CABLE PASSAGE	THICKNESS			INNER PLATE	
	A	B	C	D	E			G	L	MATERIAL	ECLOSURE	DOOR
QLP612	600	1200	400	500	1080	380	422	Type 304L	1,5 mm	2 mm	570	1140
QLP616	605	1600	400	500	1480	372	422	Type 304L	1,5 mm	2 mm	523	1518
QLP812	800	1200	400	600	1080	380	622	Type 304L	1,5 mm	2 mm	770	1140
QLP814	800	1400	400	600	1280	380	622	Type 304L	1,5 mm	2 mm	770	1340
QLP816	805	1600	400	600	1480	372	622	Type 304L	1,5 mm	2 mm	723	1518
QLP128A	1203	800	400	500	730	380		Type 304L	1,5 mm	2 mm	1170	740
QLP168A	1603	800	400	690	710	372		Type 304L	1,5 mm	2 mm	1522	722

QLP612 : three doorlocks, fairlead plate  
QLP616 - QLP 816 : three doorlocks, fairlead plate, hoisting eyebolts, inner plate adjustable on the depth  
QLP128A - QLP168A : two doors without central upright, can be certified UL TYPE 12

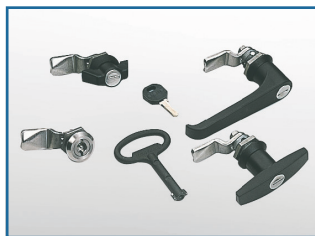
Protezione IK10 solo per ARMADIETTI PORTA SINGOLA  
UL certification to be requested with the order



**SKIRTING**



**DOOR LOCKS**



**ANTI-CLOSE DEVICE**



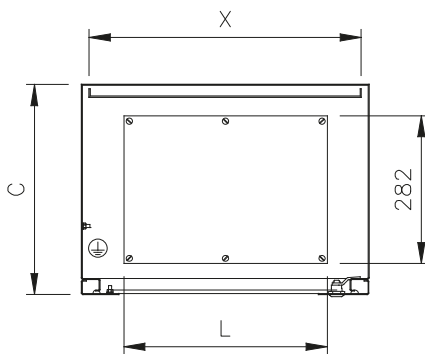
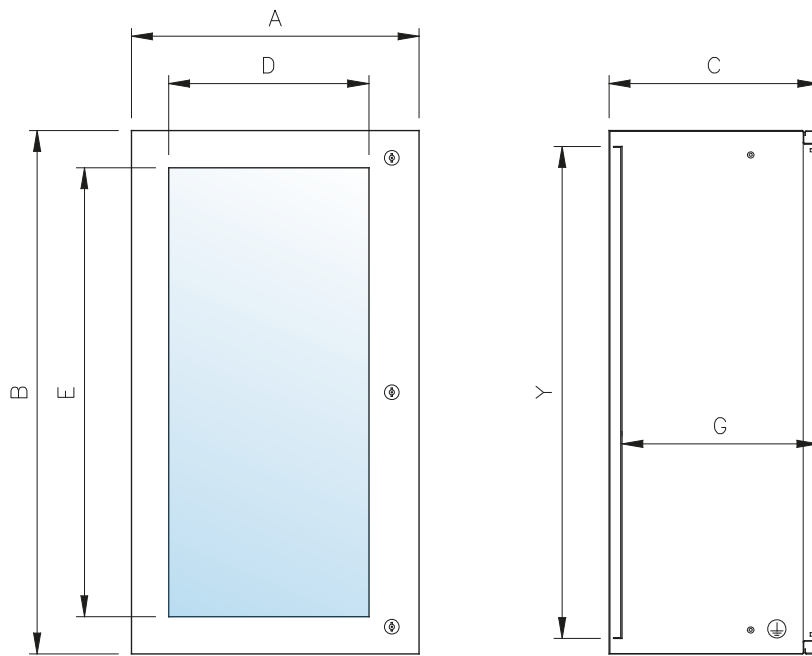
**PEDESTALS**



**SMALL CABINETS QVP**

- Material: EN 1.4307 (TYPE 304L) s/s, finely satin-finished and protected on one side.
- Enclosure obtained from a single sheet, shaped by multi-bending of the envelope front edge.
- Fairlead plate: with seal (only for cabinets H.1200 and H.1600).
- Reversible door with 3+3 shatterproof laminated glass (in compliance with the applicable accident prevention regulations).
- Door lock: twin-comb type, standardized type Ø 3 for Low Tension, with s/s outside.
- S/s inner hinges, 120° opening as per CEI EN 60204-1 recommendations.
- Seals of foamed polyurethane.
- Inner plate of sendzimir EN 10142 galvanized sheet secured to the bottom of the enclosure by threaded pins M8.
- Pre-arranged for earthing as per applicable regulations.
- Protection degree IP66 and IP69K.
- Back: prearranged with four inserts M8 for wall mount.





Tested by <b>KEMA</b> Quality Italy	<b>IP69K</b>	<b>IP66</b>	EN 60 529
<b>UL</b> US LISTED FILE N° E237618	<b>TYPE NEMA</b>	<b>4X, 4, 12, 1</b>	Standard UL508A - UL50 Standard 250
<b>CE</b>			EN 60204-1 89/392/EEC

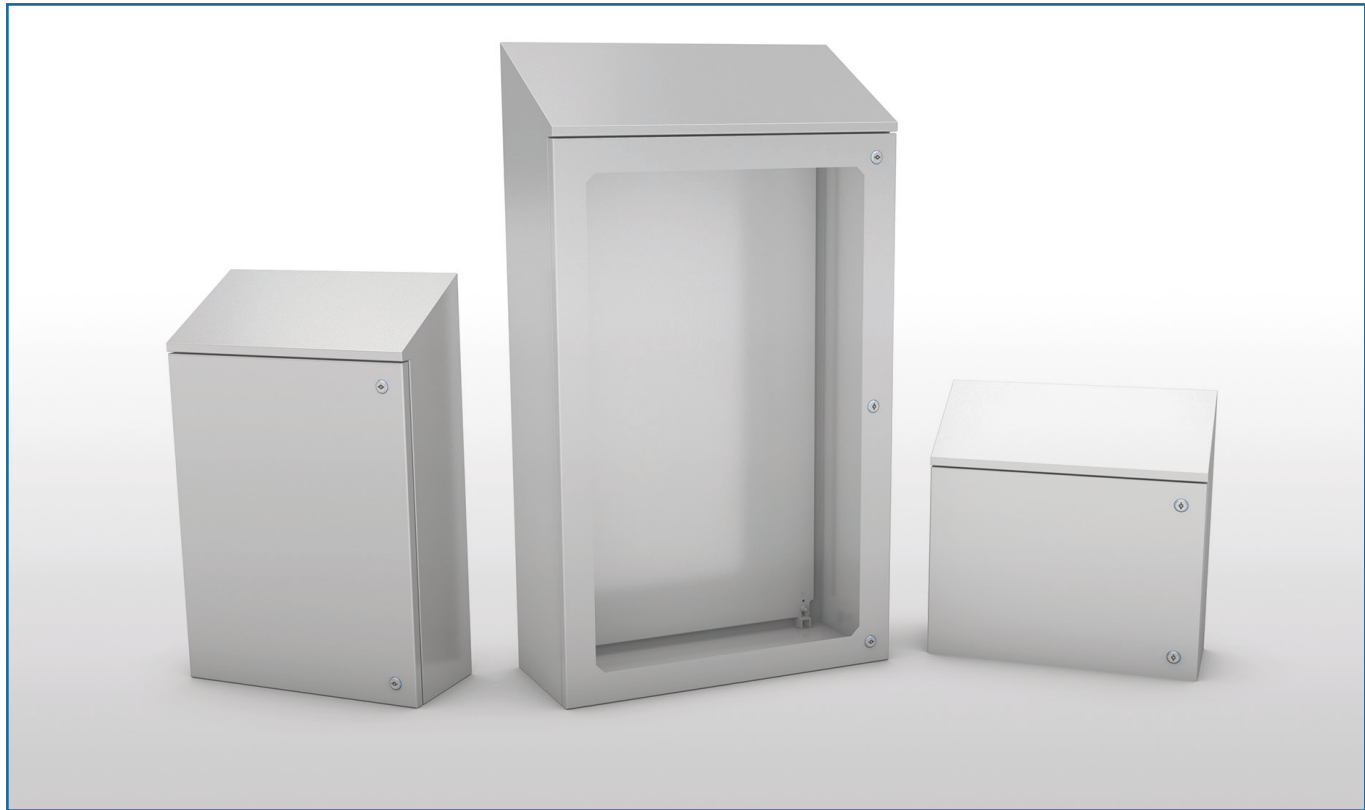
Detailed drawings per each cabinet can be downloaded from our site [www.ilinox.com](http://www.ilinox.com)

ITEM	OUTSIDE SIZES			DOOR VISIBLE		USEFUL DEPTH G	CABLE WAY L	THICKNESS			INNER PLATE	
	A	B	C	D	E			MATERIAL	ECLOSURE	DOOR	X	Y
QVP612	600	1200	400	450	1075	380	422	Type 304L	1,5 mm	2 mm	570	1140
QVP616	605	1600	400	440	1460	372	422	Type 304L	1,5 mm	2 mm	523	1518
QVP812	800	1200	400	650	1075	380	622	Type 304L	1,5 mm	2 mm	770	1140
QVP816	805	1600	400	640	1460	372	622	Type 304L	1,5 mm	2 mm	723	1518

QVP612 : three doorlocks, fairlead plate  
QVP616 - QVP 816 : three doorlocks, fairlead plate, hoisting eyebolts, inner plate adjustable on the depth

UL certification to be requested with the order

## SMALL CABINETS



### DOOR PROTECTION



Roof for door protection, rounded corners.

### SLOPING ROOF



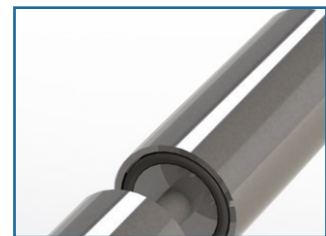
Built-in roof, 30° slope, to prevent filth build-up while facilitating the drainage of liquids.

### FEET



Adjustable feet, simple and appealing design, certified and approved for use in all those environments where compliance with hygienic-sanitary rules are the must.

### WALL MOUNTS



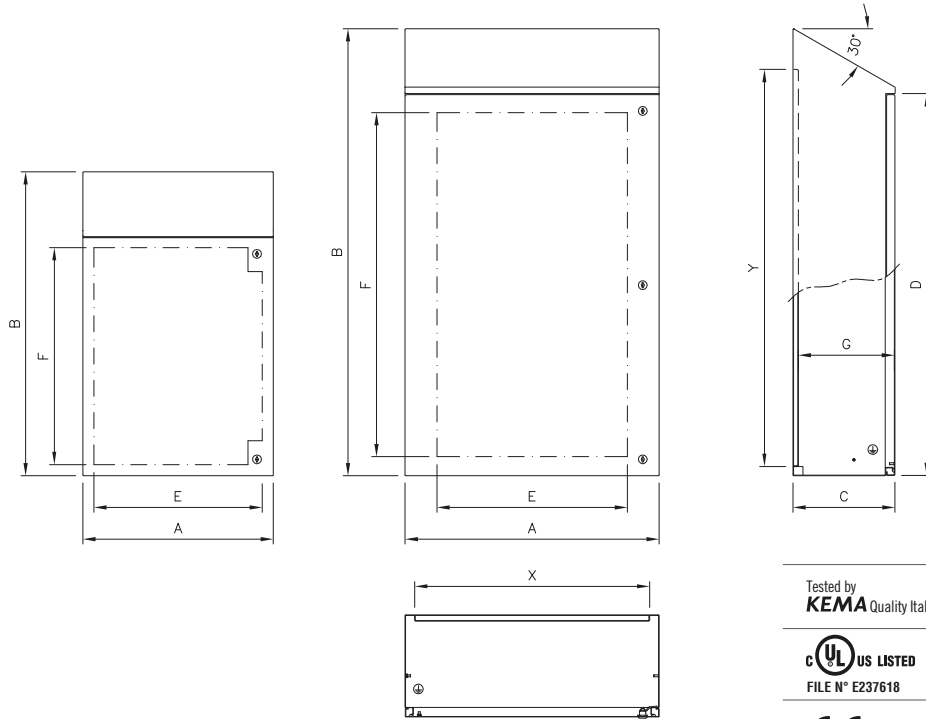
Designed to space the control board from the wall and prevent filth from building up between the two elements, and to allow cleaning.

## SMALL CABINETS QLSE

The cabinet of the QLSE Line are designed for utilization in food, dairy, pharmaceutical industries in areas where extremely stringent hygienic-sanitary regulation must be complied with, while a built-in sloping roof is however necessary to protect the gap between door and enclosure as well, to prevent matters and filth from depositing.

- Material: EN 1.4307 (TYPE 304L)s/s or, on request, EN 1.4404 (TYPE 316L) satin-finish scotch brite, protected.
- Enclosure obtained from a single sheet, shaped by multiple bending of the front edge; 30° slope roof to prevent objects being put on it and to facilitate cleaning and liquid drainage.
- Full door; glazed door available on request.
- Doorlock, twin comb standardized type, Ø 3 for L.T. key; s/s outside surfaces; sanitary doorlocks on request.
- S/s inner hinges: 120° opening according to CEI EN 60204-1 recommendation.
- Seal made bicomponent of foamed polyurethane or silicone.
- Inner plate of sendzimir EN 10142 galvanized sheet, secured to the bottom of the cabinet by s/s M8 threaded bolts delivered with the cabinet.
- Prearranged for earthing as per regulations in force.
- The back of the enclosure has 4 blind holes for easy application of the wall mount system, either traditional or sanitary.
- Glazed door with fairlead plate available on request.
- Protection degree: IP66 and IP69K as per EN 60 529.





Tested by **KEMA** Quality Italy **IP69K** **IP66** EN 60 529

**UL** US LISTED FILE N° E237618 **TYPE NEMA 4X, 4, 12, 1** Standard UL508A - UL50 Standard 250

**CE** **IK10** EN 60204-1 89/392/EEC

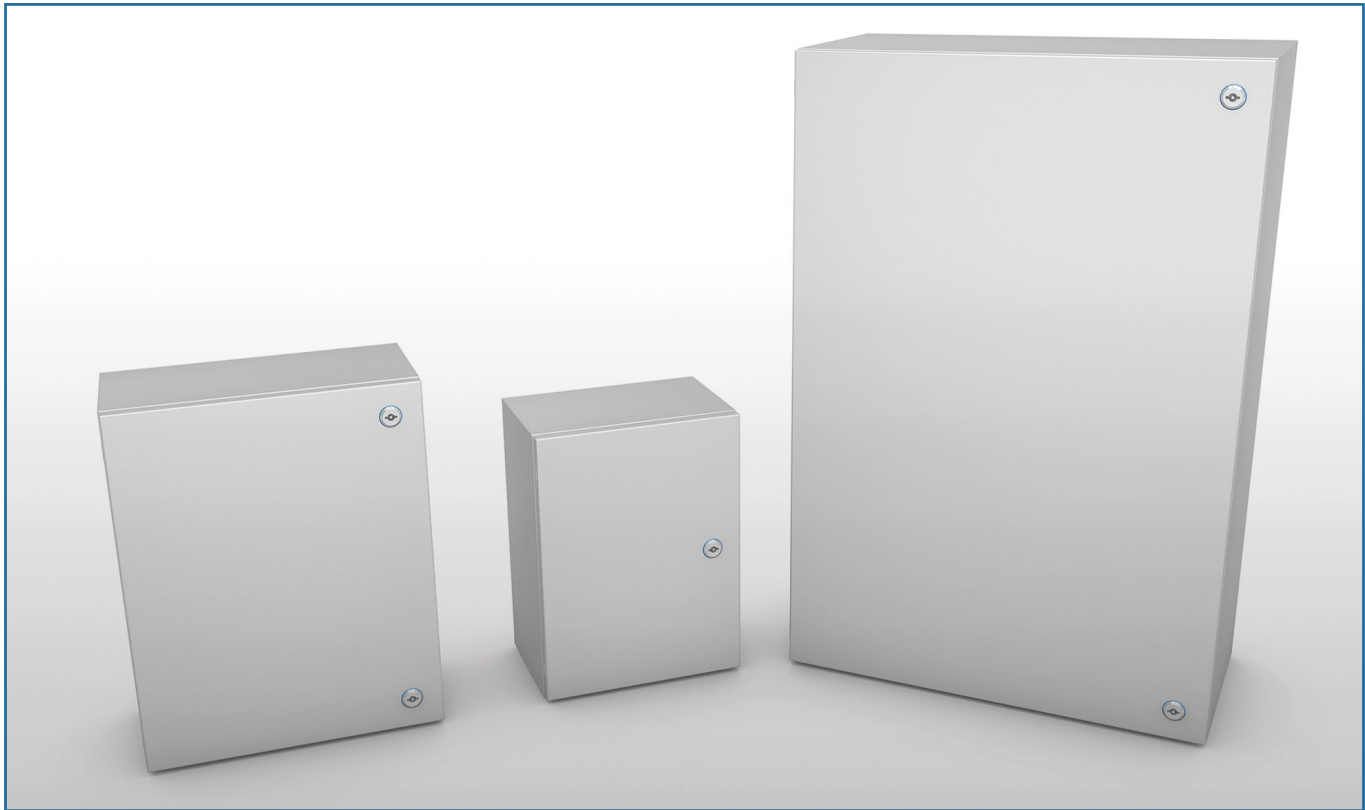
Detailed drawings per each small cabinet can be downloaded from our site [www.ilinox.com](http://www.ilinox.com)

ITEM	OUTSIDE SIZES				DOOR USEFUL SURFACE		USEFUL DEPTH G	MATERIAL		THICKNESS		INNER PLATE	
	A	B	C	D	E	F		GASKET	SMALL CABINET	ENCLOSURE	DOOR	X	Y
QLSE33/304A	300	427	180	300	230	230	158	polyurethane	Type 304L	1,2 mm	1,5 mm	240	350
QLSE34/304A	300	588	200	450	230	380	178	polyurethane	Type 304L	1,2 mm	1,5 mm	240	500
QLSE43/304A	450	438	200	300	380	230	178	polyurethane	Type 304L	1,2 mm	1,5 mm	390	350
QLSE44/304A	450	588	200	450	380	380	178	polyurethane	Type 304L	1,2 mm	1,5 mm	390	500
QLSE46/304A	450	767	250	600	380	530	228	polyurethane	Type 304L	1,2 mm	1,5 mm	390	650
QLSE64/304A	600	618	250	450	530	380	228	polyurethane	Type 304L	1,2 mm	1,5 mm	540	500
QLSE66/304A	600	767	250	600	530	530	228	polyurethane	Type 304L	1,2 mm	1,5 mm	540	650
QLSE67/304A	600	917	250	750	530	680	227	polyurethane	Type 304L	1,5 mm	2 mm	540	800
QLSE710/304A	750	1196	300	1000	680	930	277	polyurethane	Type 304L	1,5 mm	2 mm	690	1050
QLSE86/304A	800	796	300	600	730	530	277	polyurethane	Type 304L	1,5 mm	2 mm	740	650
QLSE812/304A	800	1408	320	1200	600	1080	297	polyurethane	Type 304L	1,5 mm	2 mm	740	1250
QLSE33S/316A	300	427	180	300	230	230	158	silicone	Type 316L	1,5 mm	1,5 mm	240	350
QLSE34S/316A	300	588	200	450	230	380	178	silicone	Type 316L	1,5 mm	1,5 mm	240	500
QLSE43S/316A	450	438	200	300	380	230	178	silicone	Type 316L	1,5 mm	1,5 mm	390	350
QLSE44S/316A	450	588	200	450	380	380	178	silicone	Type 316L	1,5 mm	1,5 mm	390	500
QLSE46S/316A	450	767	250	600	380	530	228	silicone	Type 316L	1,5 mm	1,5 mm	390	650
QLSE64S/316A	600	618	250	450	530	380	228	silicone	Type 316L	1,5 mm	1,5 mm	540	500
QLSE66S/316A	600	767	250	600	530	530	228	silicone	Type 316L	1,5 mm	1,5 mm	540	650
QLSE67S/316A	600	917	250	750	530	680	227	silicone	Type 316L	1,5 mm	2 mm	540	800
QLSE710S/316A	750	1196	300	1000	680	930	277	silicone	Type 316L	1,5 mm	2 mm	690	1050

NOTE: QLSE812 : three doorlocks

UL certification to be requested with the order

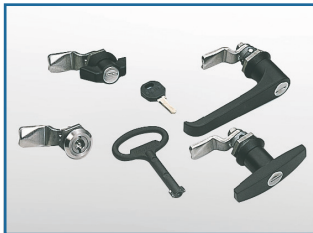
## SMALL CABINETS



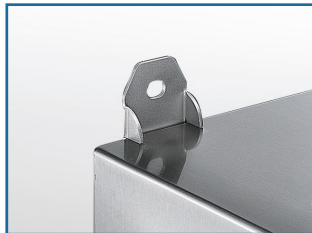
RAIN PROTECTIONS



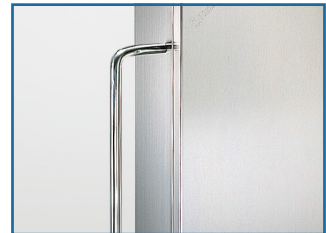
DOOR LOCKS



WALL FIXING LUGS

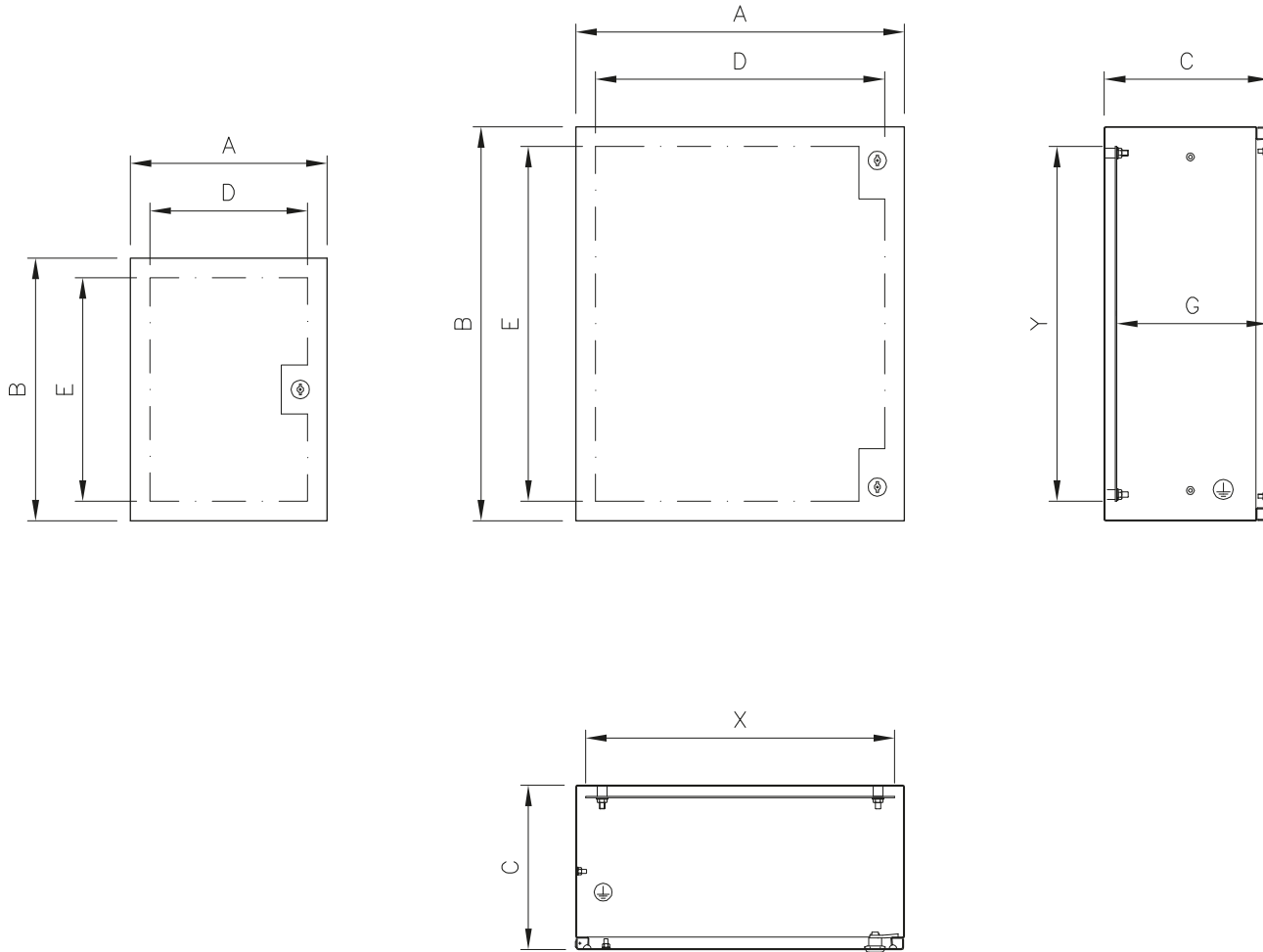


HANDLE GRIP



### SMALL CABINETS QS

- Material: EN 1.4307 (TYPE 304L) s/s, finely satin-finished and protected on one side.
- Enclosure obtained from one single sheet, shaped to obtain the seal labyrinth between enclosure and door.
- Inside: threaded pins M8 to fix the plate and its rest.
- Full door.
- Twin-comb locks of the standardized type  $\varnothing 3$  for Low Voltage, chromium plated.
- S/s inner hinges, 120° opening according to CEI EN 60204-1 recommendations.
- Seal of foamed polyurethane.
- Inner plate of EN 10142 sendzimir galvanized sheet secured to the bottom of the container by M8 threaded pins delivered with the cabinet.
- Prearranged for earthing according to the regulations in force.
- Protection degree IP66.
- Back: prearranged with four inserts M6 for wall mount.



**IP66  
IK10**

EN 60 529/97-05  
EN 50 102/96-05



EN 60204-1  
89/392/EEC

Detailed drawings per each cabinet can be downloaded from our site [www.ilinox.com](http://www.ilinox.com)

ITEM	OUTSIDE SIZES			DOOR USEFUL SURFACE		USEFUL DEPTH G	MATERIAL	THICKNESS		INNER PLATE	
	A	B	C	D	E			ECLOSURE	DOOR	X	Y
QS034	300	400	200	240	340	180	Type 304L	1,2 mm	1,5 mm	270	340
QS045	400	500	200	340	440	180	Type 304L	1,2 mm	1,5 mm	370	440
QS056	500	600	250	440	540	230	Type 304L	1,2 mm	1,5 mm	470	540
QS068	600	800	250	540	740	230	Type 304L	1,2 mm	1,5 mm	570	740
QS069	600	900	300	540	840	280	Type 304L	1,2 mm	1,5 mm	570	840

NOTE: QS034 : one central doorlock

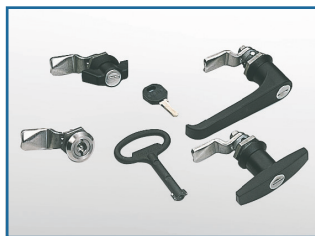




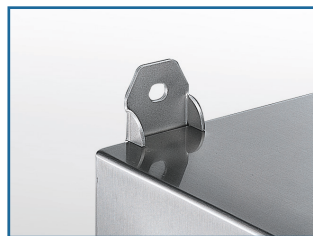
RAIN PROTECTIONS



DOOR LOCKS



WALL FIXING LUGS

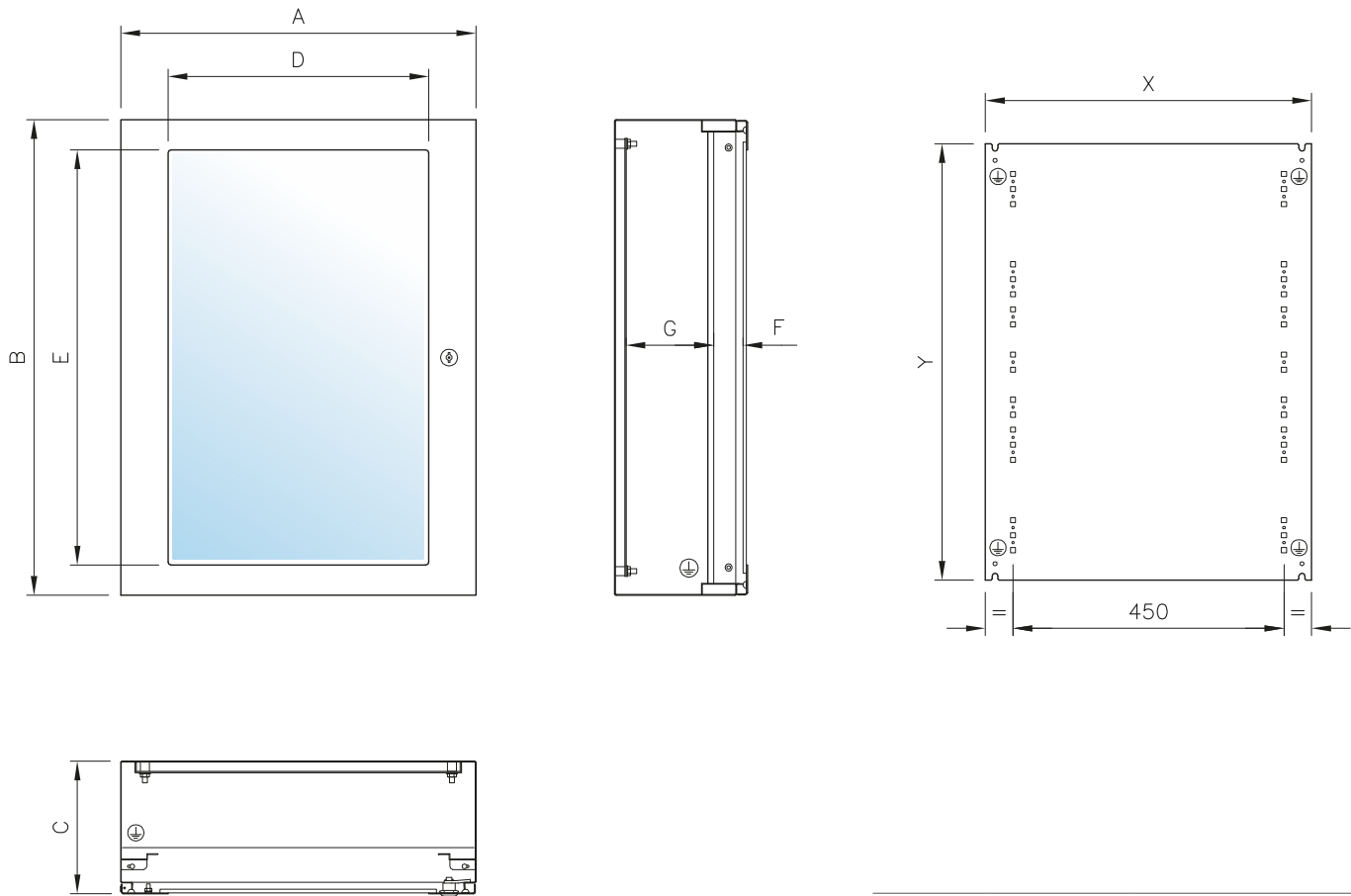


PANELS



## SMALL CABINETS QM

- The new QM series is designed to accommodate modular equipment.
- Made of EN 1.4307 (TYPE 304L) s/s, finely satin finished and protected on 1 side.
- Special attention was paid, in the design stage, to the details permitting to streamline and speed up wiring, without disregarding aesthetic, which has always been the hallmark of our work.
- The enclosure is obtained from a sheet suitably shaped on the front side to obtain the "seal labyrinth" between enclosure and door.
- The door, press-forged, features 3+3 shatterproof laminated glass to meet safety and long lasting unalterability requirements.
- Single central lock, twin-comb type, standardized  $\varnothing 3$  for Low Voltage. Chromium-plated with attachment for 3-point lock, starting from model QM096.
- Inner hinges, s/s, 120° opening according to CEI EN 60204-1 recommendations.
- Seal of foamed polyurethane.
- Inner plate of sendzimir galvanized sheet, pre-drilled for DIN guides assembling. The assembling of guides and the relevant modular switches can be done in the factory to facilitate introduction of the pre-assembled frame into the cabinet. The modular panels are secured to two pre-drilled side uprights fixed to the enclosure.
- Fairlead plate not included.
- Prearranged for earthing according to the regulations in force.
- Protection degree : IP65 with closed door, IP20 with open door.
- Back: prearranged with four M6 inserts for wall mount.



IP56

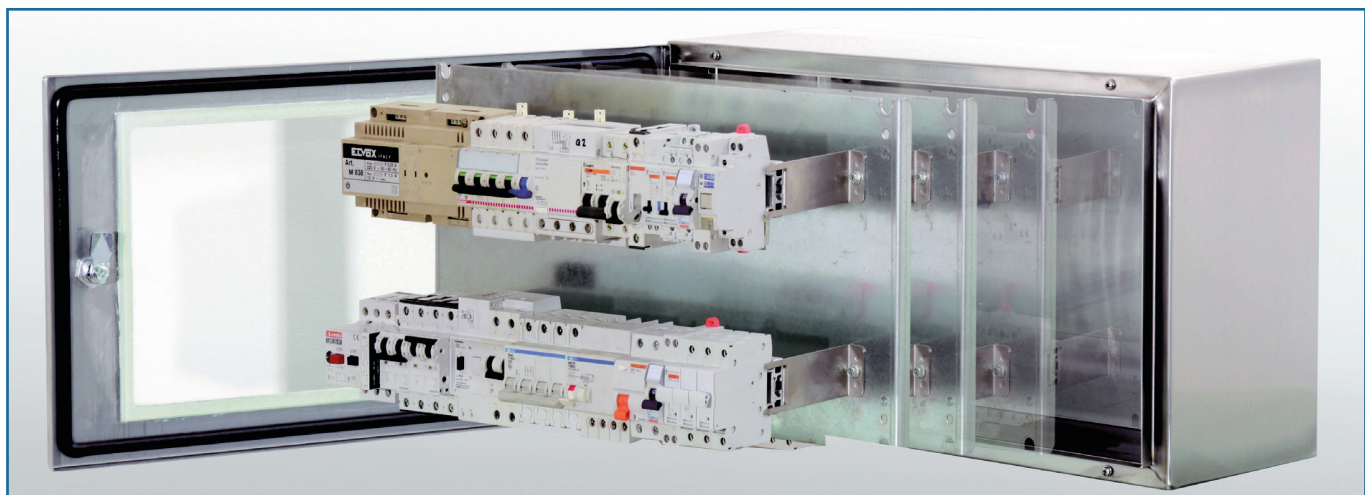
EN 60 529/97-05  
EN 50 102/96-05



EN 60204-1  
89/392/EEC

Detailed drawings per each cabinet can be downloaded from our site [www.ilinox.com](http://www.ilinox.com)

ITEM	OUTSIDE SIZES			DOOR VISIBLE		GLASS/PANEL GAP F	USEFUL DEPTH G	THICKNESS			INNER PLATE	
	A	B	C	D	E			MATERIAL	ECLOSURE	DOOR	X	Y
QM048	590	340	220	433	240	48	145	Type 304L	1,2 mm	1,5 mm	542	275
QM072	590	490	220	433	390	48	145	Type 304L	1,2 mm	1,5 mm	542	425
QM096	590	640	220	433	540	48	145	Type 304L	1,2 mm	1,5 mm	542	575
QM120	590	790	220	433	690	48	145	Type 304L	1,2 mm	1,5 mm	542	725
QM144	590	940	220	433	840	48	145	Type 304L	1,2 mm	1,5 mm	542	875
QM168	590	1090	220	433	990	48	145	Type 304L	1,2 mm	1,5 mm	542	1025

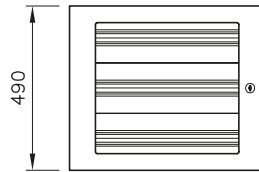


# SMALL CABINETS

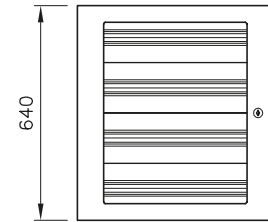
## EQUIPMENT FOR MODULAR SWITCHES



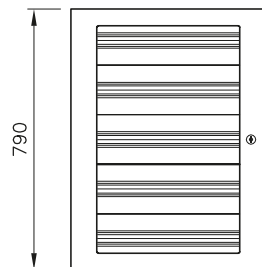
**QM048**  
N. 48 MODULES (2 PQM150F)



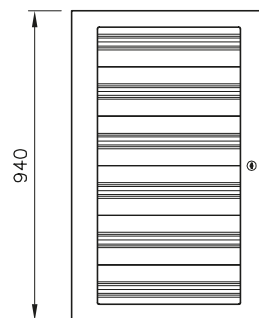
**QM072**  
N. 72 MODULES (3 PQM150F)



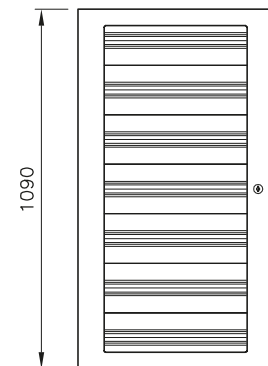
**QM096**  
N. 72 MODULES (3 PQM200F)  
N. 96 MODULES (4 PQM150F)



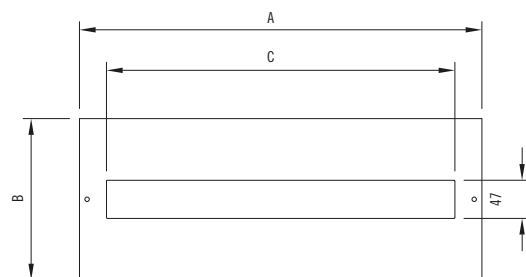
**QM120**  
N. 96 MODULES (1 PQM150F + 3 PQM200F)  
N. 120 MODULES (5 PQM150F)



**QM144**  
N. 120 MODULES (2 PQM150F + 3 PQM200F)  
N. 144 MODULES (6 PQM150F)



**QM168**  
N. 144 MODULES (3 PQM150F + 3 PQM200F)  
N. 168 MODULES (7 PQM150F)



### PANELS

EN 1.4307 (TYPE 304L) s/s execution, finely satin-finished, to be bolted to the cabinet frame. Available in two different heights, 150 and 200mm, either pre-drilled or full; the latter can be drilled to drawing on demand. They can accommodate no. 24 modules each plate and are spaced 50mm from the glazed door.

ITEM	SIZES PANELS			N. MODULES FOR PANEL
	A	B	C	
PQM150F	499	149	432	24
PQM150C	499	149		CIECO-BLIND
PQM200F	499	199	432	24
PQM200C	499	199		CIECO-BLIND



### DIN BARS

Obtained from extruded aluminium, they come complete with brackets of galvanized steel. Not included in the panels, they must be ordered separately.

- **DINQM24** – DIN bar, complete with brackets





### INNER DOORS

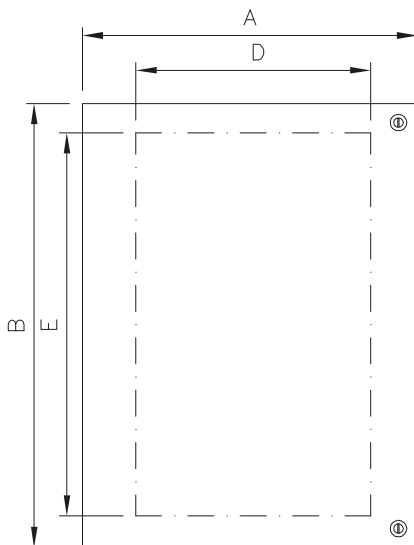
Delivered in assembling kit, to fix equipment inside the small cabinets in a protected and locked area, they can be installed on all the small cabinets of the one-door Q series.

EN 1.4307 (TYPE 304L), s/s execution, finely satin-finished and protected

by PVC adhesive film, thickness 12/10 and 15/10.

The inner door can be hinged on either the right or the left side. The standard supply includes chromium-plated indented locks. Instruments up to a maximum total weight of 12 kg can be set on the inner doors.

- The gap between door and inner door is 45 mm.
- Protection degree IP20.
- Drilling to drawing is possible on demand.



ITEM	SIZES		SPACE DRILLING		FOR SMALL CABINETS
	A	B	D	E	
QC033/304	256	238	156	178	QL-QV33
QC034/304	256	388	156	328	QL-QV34
QC036/304	256	538	156	478	QL-QV36
QC043/304	406	238	306	178	QL-QV43
QC044/304	406	388	306	328	QL-QV44
QC046/304	406	538	306	478	QL-QV-QLP-QVP46
QC064/304	556	388	456	328	QL-QV64
QC066/304	556	538	456	478	QL-QV-QLP-QVP66
QC067/304	556	688	456	628	QL-QV67
QC068/304	556	738	456	678	QLP-QVP68
QC069/304	556	838	456	778	QL-QV69
QC077/304	706	688	606	628	QL-QV77
QC710/304	706	938	606	878	QL-QV710
QC612/304	556	1138	456	1078	QLP-QVP612
QC812/304	756	1138	656	1078	QL-QV-QLP-QVP812
QC616/304	552	1513	452	1453	QLP-QVP616
QC816/304	752	1513	652	1453	QLP-QVP816

Note : Not to be used on small cabinets series QS and series QM

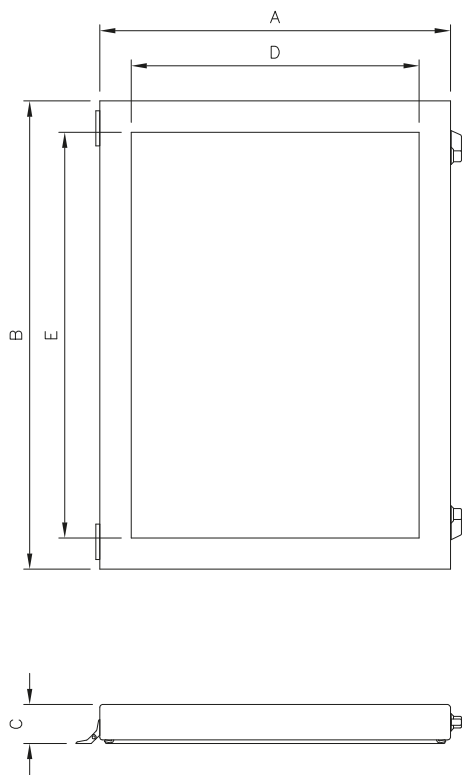
## SMALL CABINETS



### OVERDOORS

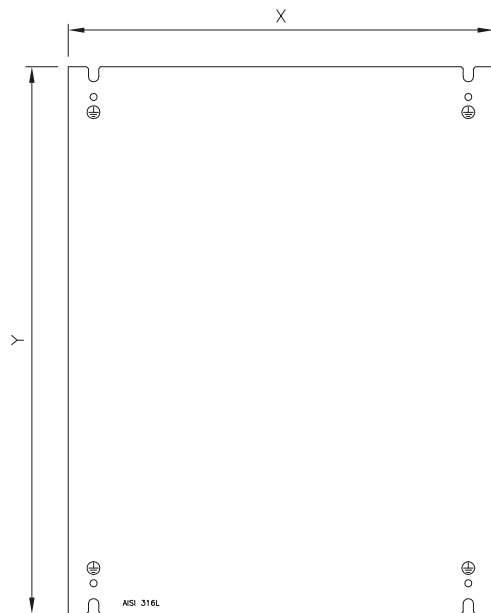
Made of EN 1.4307 (TYPE 304L) s/s, finely satin- finished, with 3+3 shatterproof laminated window, they are particularly recommended when instruments set on the outside door have to be protected. Complete with wing-nut black lock, galvanized, with Yale type key and built-in seal; 180° opening. Protection degree IP65.

NOTE: when set on width exceeding the width of the overdoor itself, the max. opening is 90°.



ITEM	A	B	C	D	E
SV33/45	300	300	45	220	220
SV34/45	300	450	45	220	370
SV36/45	300	600	45	220	520
SV43/45	450	300	45	370	220
SV44/45	450	450	45	370	370
SV46/45	450	600	45	370	520
SV64/45	600	450	45	520	370
SV66/45	600	600	45	520	520
SV67/45	600	750	45	520	670
SV68/45	600	800	45	520	720
SV69/45	600	900	45	520	820
SV612/45	600	1200	45	520	1120
SV77/45	750	750	45	670	670
SV710/45	750	1000	45	670	920
SV86/45	800	600	45	720	520
SV812/45	800	1200	45	720	1120
SV106/45	1000	750	45	920	670

ITEM	A	B	C	D	E
SV33/75	300	300	75	220	220
SV34/75	300	450	75	220	370
SV36/75	300	600	75	220	520
SV43/75	450	300	75	370	220
SV44/75	450	450	75	370	370
SV46/75	450	600	75	370	520
SV64/75	600	450	75	520	370
SV66/75	600	600	75	520	520
SV67/75	600	750	75	520	670
SV68/75	600	800	75	520	720
SV69/75	600	900	75	520	820
SV612/75	600	1200	75	520	1120
SV77/75	750	750	75	670	670
SV710/75	750	1000	75	670	920
SV86/75	800	600	75	720	520
SV812/75	800	1200	75	720	1120
SV106/75	1000	750	75	920	670



### S/S INNER PLATES

EN 1.4404 (TYPE 316L)s/s execution, 2B finishing; available for all the cabinets of the QL/QV series; delivered in assembling kit (replacement at customer's charge).

ITEM	SIZES		FOR SMALL CABINETS
	X	Y	
PQ033I	270	240	QL-QV33
PQ034I	270	390	QL-QV34
PQ036I	270	540	QL-QV36
PQ043I	420	240	QL-QV43
PQ044I	420	390	QL-QV44
PQ046I	420	540	QL-QV-QLP-QVP46
PQ064I	570	390	QL-QV64
PQ066I	570	540	QL-QV-QLP-QVP66
PQ067I	570	690	QL-QV67
PQ069I	570	840	QL-QV69
PQ077I	720	690	QL-QV77
PQ710I	720	940	QL-QV710
PQ812I	770	1140	812710
PQ107I	970	690	QL107



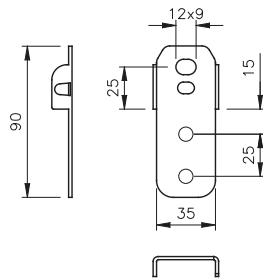
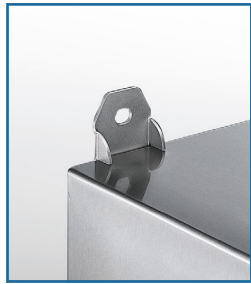
### RAIN PROTECTIONS

EN 1.4307 (TYPE 304L)s/s execution, fine satin-finished and protected, they are available for all the cabinets. Recommended when the cabinets are envisaged to be installed outdoors and weather protection is therefore required.

They protrude 25mm from the front door and come in assembling kit.

ITEM	FOR SMALL CABINETS
TP933	QL/QV33
TP934	QL/QV34 - QS034
TP936	QL/QV36
TP944	QL/QV43-44
TP945	QS045
TP946	QL/QV46
TP956	QS056
TP960	QL/QV64-66-67-69 - QS68
TP966	QL66P - QS069
TP977	QL/QV77-710
TP980	QL/QV812
TP946P	QLP/QVP46
TP960P	QLP/QVP66-68-612
TP980P	QLP/QVP812
TP9616P	QLP/QVP616
TP9816P	QLP/QVP816

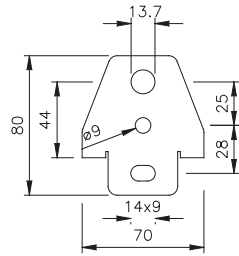
## SMALL CABINETS



### WALL FIXING LUGS

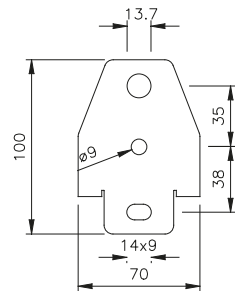
EN 1.4404 (TYPE 316L) s/s execution, they are easily set to the back of the cabinets of the "Q" series by the prearranged threaded drill. For assembling on big-sized enclosures, a second drill is foreseen at customer's charge. Waterproofing is assured by special seals. Each kit comes complete with assembling instructions, screws, nuts and washers.

- **SP025** – wall mount kit, 4 pcs.



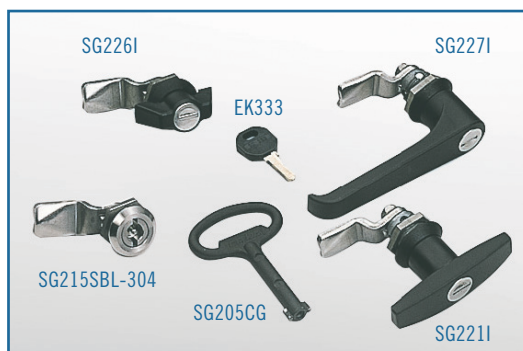
Realizzati in inox EN 1.4404 (TYPE 316L).  
Fissaggi a parete per gli armadietti QLP / QVP codici 612, 812, 814, 128A.

- **SP025QLP40** – kit fissaggi a parete da 4 pz



Realizzati in inox EN 1.4404 (TYPE 316L).  
Fissaggi a parete per gli armadietti QLP / QVP codici 816, 616, 168A.

- **SP025QLP60** – kit fissaggi a parete da 4 pz



### DOOR LOCKS

Per tutti i tipi di armadietti sono previste diverse serrature opzionali, tutte perfettamente intercambiabili con quelle montate in dotazione standard, sia con chiave a bassa tensione che con chiave tipo Yale.

- **QL** – cod: SG221I, SG226I, SG227I, SG215SBL-304.
- **QS** – cod: SG215ZC, SG221ZC, SG226ZC, SG227ZC, SG215S-QS.

ITEM	TYPE	EXTERNAL	MATERIAL INSERT	TONGUE
SG215SBL-304	Box lock twin-comb insert	AISI 304 S/S	AISI 304 S/S	Zinc plated
SG221I	"T" handle key EK333(*)	Black polyamides	AISI 304 S/S	AISI 304 s/s
SG226I	Wing nut lock key EK333(*)	Black polyamides	AISI 304 S/S	AISI 304 s/s
SG227I	"L" handle key EK333(*)	Black polyamides	AISI 304 S/S	AISI 304 s/s

NOTE:

(\*) Key EK333 Yale type is supplied with the lock. Different key coding can be provided on request.

Optional key to be ordered separately: item SG205CG (not in s/s). To have also the tongue in TYPE 304 s/s please ask for item KIT SG215.





### GAS-OPERATED SPRINGS

The gas-operated springs are designed to open the doors upwards (seagull-wings); they facilitate opening and feature a braking device on top of the wing, reaching a balanced position when the door is open. Different capacities are available to meet the specific requirements. When ordering the springs, the weight and position of instruments and/or equipment, if any, should be mentioned so that the spring best suiting your requirements can be determined.

- **SA910** – gas-operated spring 10 Kg (including assembling)
- **SA915** – gas-operated spring 15 Kg (including assembling)
- **SA920** – gas-operated spring 20 Kg (including assembling)
- **SA930** – gas-operated spring 30 Kg (including assembling)
- **SA940** – gas-operated spring 40 Kg (including assembling)
- **SA950** – gas-operated spring 50 Kg (including assembling)



### COUNTER-WEIGHTED SUPPORT RODS

The counter-weighted support rods can be applied to all types of cabinets when the door needs to be opened upwards (seagull-wing). Handy and safe, they reach the right position automatically at opening, so as to keep the door open. Can be assembled on the right or the left side. Starting from the size 600x600 up, the use of 2 rods is recommended, one on the right side and one on the left side.

- **ASQLVDX** – support rod DX for QL/QV/QLP/QVP
- **ASQLVSX** – support rod SX for QL/QV/QLP/QVP
- **ASQSMDX** – support rod DX for QS/QM
- **ASQSMSX** – support rod SX for QS/QM

NOTE: for big-sized doors and weight exceeding 12 kg, the use of the gas-operated springs is recommended.



### ANTI-CLOSE DEVICE

EN 1.4404 (TYPE 316L) s/s EXECUTION, recommended to prevent the door accidental closing. Not suitable for cabinet with upwards opening door (seagull-wing).

- **DAC05** – Delivered in assembling kit.



MANIGLIA DI PRESA **MNB**



MANIGLIA DI PRESA **MBK**

### GRIP HANDLES

Made of TYPE 304 s/s rod, polished; recommended when the cabinet is used as a control box.

They come in assembling kit and two versions are available:

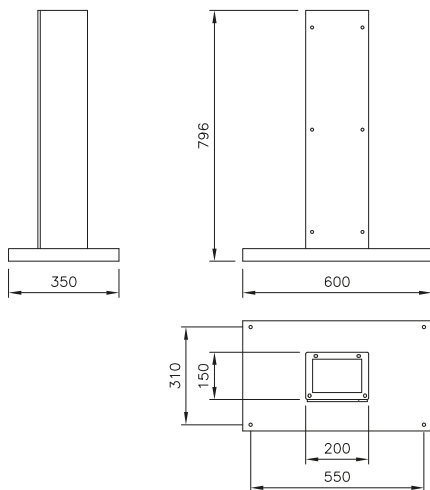
- **MNB200** – fastening distance between centres 200 mm.
- **MNB300** – fastening distance between centres 300 mm.
- **MBK300** – fastening distance between centres 275 mm.
- **MBK350** – fastening distance between centres 325 mm.
- **MBK450** – fastening distance between centres 425 mm.
- **MBK500** – fastening distance between centres 475 mm.

## SMALL CABINETS



### PEDESTALS

Ideal for use either as simple stand or cable way, they are made of EN 1.4307 (TYPE 304L) s/s and available in two versions.

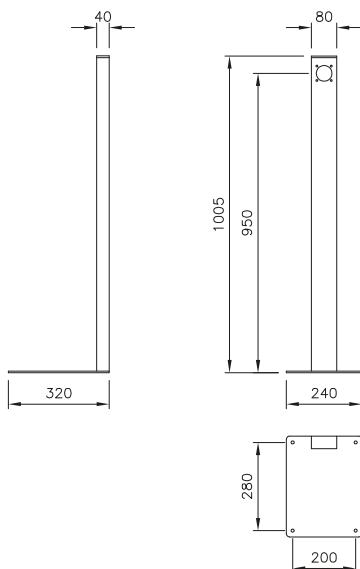


### PEDESTAL SERIES PR200

Satin-finished, suitable for application under cabinets having a minimum depth of 250 mm; it consists of a C-shaped bent column, complete with bolted cover with gasket to assure inspectability. Complete with sendzimir inner plate. Protection degree IP65. A sendzimir counterplate is also available to firmly secure the modular cabinets to the top of the column (for cabinets starting from L.600).

These counterplates have to be ordered expressly, using the following codes:

- **PPRQ6025** – counterplate for cabinets QL/QV64-66-67-69.
- **PPRQ7530** – counterplate for cabinets QL/QV77-710.



### PEDESTAL PR100

Used for pushbutton-boards and cabinets with minimum depth 125 mm, it consists of s/s channel, micropeened, not inspectable, and a predrilled plate for ground fixing.



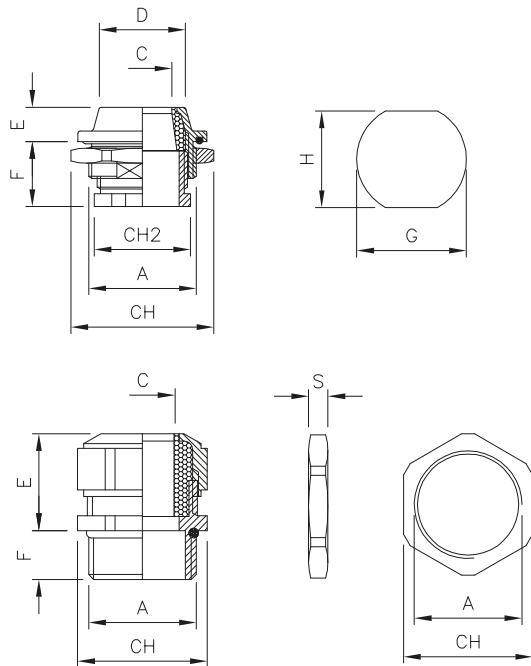
### CABLE GLANDS

The cable glands, s/s execution, are to be used to prevent corrosion. This series, manufactured to UNI EN 1.4305 (TYPE 303), is particularly fit for use in wet environment and in dry/wet conditions.

The FPM seal creates a barrier to the radioactive radiance of up to 2,5x10<sup>5</sup> Gray, and assures excellent strength to cable pulling.

- Protection degree IP68 to EN 60 529 and IP69K to DIN 40 050-T9.
- Temperature range: -40°C + 200°C, intermittent up to 240°C.
- EMC version available on demand.

These cable glands are delivered without ring nut, which must be ordered separately when the need be.



#### RING NUT PG

ITEM	THREADING A	KEY	
		CH	S
GPG07303	PG7	15	3,5
GPG09303	PG9	19	3,5
GPG11303	PG11	22	3,5
GPG13303	PG13	24	4
GPG16303	PG16	27	4
GPG21303	PG21	32	4,5
GPG29303	PG29	41	5,5
GPG36303	PG36	51	6

#### CABLE GLAND PG

ITEM	THREADING A	CABLE DIAMETER C	KEY		
			CH	E	F
PG07303	PG7	5 ÷ 6,5	17	17	10
PG09303	PG9	8 ÷ 10,5	19	20	10
PG11303	PG11	8,5 ÷ 12	22	21	10
PG13303	PG13	11 ÷ 15	24	21	10
PG16303	PG16	11 ÷ 15	24	21	10
PG21303	PG21	16 ÷ 20,5	30	25	12
PG29303	PG29	23 ÷ 27,5	41	28	12
PG36303	PG36	30,5 ÷ 35	50	32	15

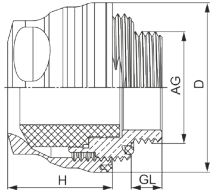
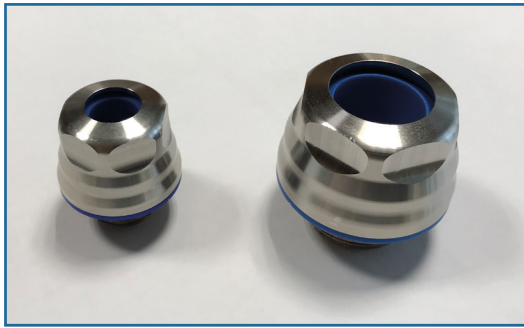
#### METRIC RING NUT

ITEM	THREADING A	KEY	
		CH	S
GPM12303	M12x1,5	17	3
GPM16303	M16x1,5	19	3
GPM20303	M20x1,5	24	3,5
GPM25303	M25x1,5	30	3,5
GPM32303	M32x1,5	36	4,5
GPM40303	M40x1,5	46	4,5

#### METRIC CABLE GLAND

ITEM	THREADING A	CABLE DIAMETER C	KEY		
			CH	E	F
PM12303/3.5-5.0	M12x1,5	3,5 ÷ 5	17	17	10
PM12303/5.0-6.5	M12x1,5	5 ÷ 6,5	17	17	10
PM12303/6.5-8.0	M12x1,5	6,5 ÷ 8	17	17	10
PM16303/6.0-10.5	M16x1,5	8 ÷ 10,5	19	20	10
PM20303/8.0-15.0	M20x1,5	8 ÷ 15	24	21	10
PM25303/12.5-20.5	M25x1,5	12,5 ÷ 20,5	30	25	11
PM32303/17.0-25.5	M32x1,5	17 ÷ 25,5	36	28	13
PM40303/24.0-33.0	M40x1,5	24 ÷ 33	46	31	13

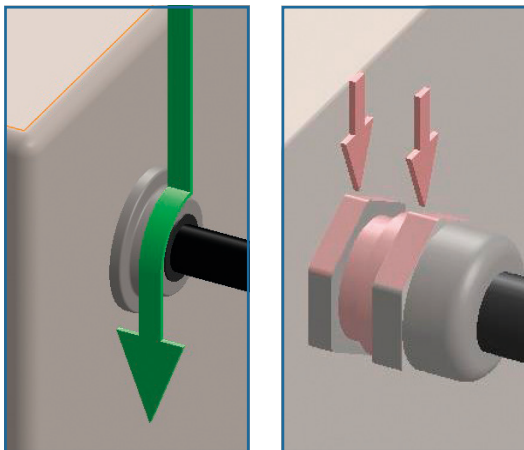
## SMALL CABINETS



Advice:

- EMC connection integrated
- VDMA Riboflavin cleaning test passed
- EHEDG 01 cleaning test passed
- EHEDG certificate EL class I AUX approved

### IDEAL FOR HIGH-PRESSURE CLEANING



### CABLE GLANDS

Metric cable glands Series PH meet the requirements for use in food, dairy, pharmaceutical industries as well as in all those environments where compliance with hygienic-sanitary regulations is a must (Directive on machinery 2006/42/EC DIN EN 1672-2-2005, Documents EHEDG 8 E 13). This is possible thanks to the technical solutions adopted and to the design criteria: 25% sloping surfaces to avoid filth build-up; radial corners; no threads; gaps in contact with the outside; tamperproof for they cannot be opened from the outside. Delivered complete with OR, standard seal on the cable and ring nut.

EN 1.4307 (TYPE 304L) s/s execution, mirror finish; the EPDM seal is fit for use in the environments for which the cable gland has been designed: gaskets made from different materials can be supplied on request.

- Protection degree IP68 as per EN 60 529 and IP69K as per DIN 40 050-T9.
- Temperature range: -40°C + 180°C, intermittent up to 40°C approx.

### SANITARY CABLE GLAND

Smooth slanting surfaces, no threads in contact with the environment, radial corners.

### TRADITIONAL CABLE GLAND

Unprotected threads, sharp corners and level surfaces not draining.

ITEM	CLAMPING RANGE (MM)	AG	GL (MM)	D (MM)	SW (MM)	H (MM)
PH12050	5 - 6,5	M 12 x 1,5	6	21	14	19
PH16060	6 - 7,5	M 16 x 1,5	6	27	19 - 21	20
PH16075	7,5 - 10	M 16 x 1,5	6	27	19 - 21	20
PH20090	9 - 12	M 20 x 1,5	6	33	24 - 27	22,5
PH20110	11 - 13,5	M 20 x 1,5	6	33	24 - 27	22,5
PH25140	14 - 16	M 25 x 1,5	7	38	30	23,5
PH25150	15 - 18	M 25 x 1,5	7	38	30	23,5
PH32180	18 - 21	M 32 x 1,5	8	45	36	26,5
PH32210	21 - 25	M 32 x 1,5	8	45	36	26,5

### PLUGS

EN 1.4404 (TYPE 316L) s/s execution, to close holes previously made and not used.

With only 4 items, using the appropriate centring washers, all the drills ranging between Ø 6,5 and Ø 40 mm. can be covered, including shaped drills for the cable glands of the "SANITARY" series.

ITEM	Ø	RANGE GLANDS	
		FOR DRILLS	FOR CABLE GLANDS
TP0716	20	6,5 ÷ 16	PG7 - PG9 - M12 - M16
TP1624	28	16,5 ÷ 24	PG11 - PG13,5 - PG16 - M20
TP2431	35	24,5 ÷ 31	PG21 - M25
TP3140	45	31,5 ÷ 40	PG29 - M32 - M 40



ACCESSORIES FOR SMALL CABINETS

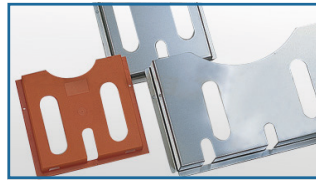
SRS Wiring System



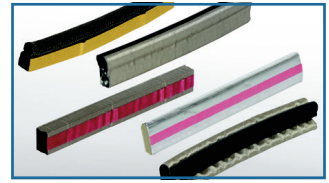
Adjustable Feet



Diagram Holding Pockets



Electroconductive Gaskets



Lamps



Taps



IN THE SECTION "CONTROL BOXES AND HANGING SYSTEMS"

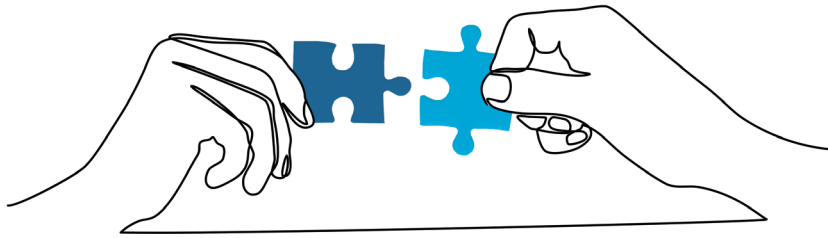
Hanging Systems



IN THE SECTION "AIR CONDITIONING"

Ventilation





## **Piece by piece we're making your business safer.**

---

### **Spare parts always available over the years.**

Assurance of a product covered by non-stop assistance. Ilinox customers are assured they will always have available, even many years later, spare parts for all the models of boxes or cabinets, including those no longer manufactured.