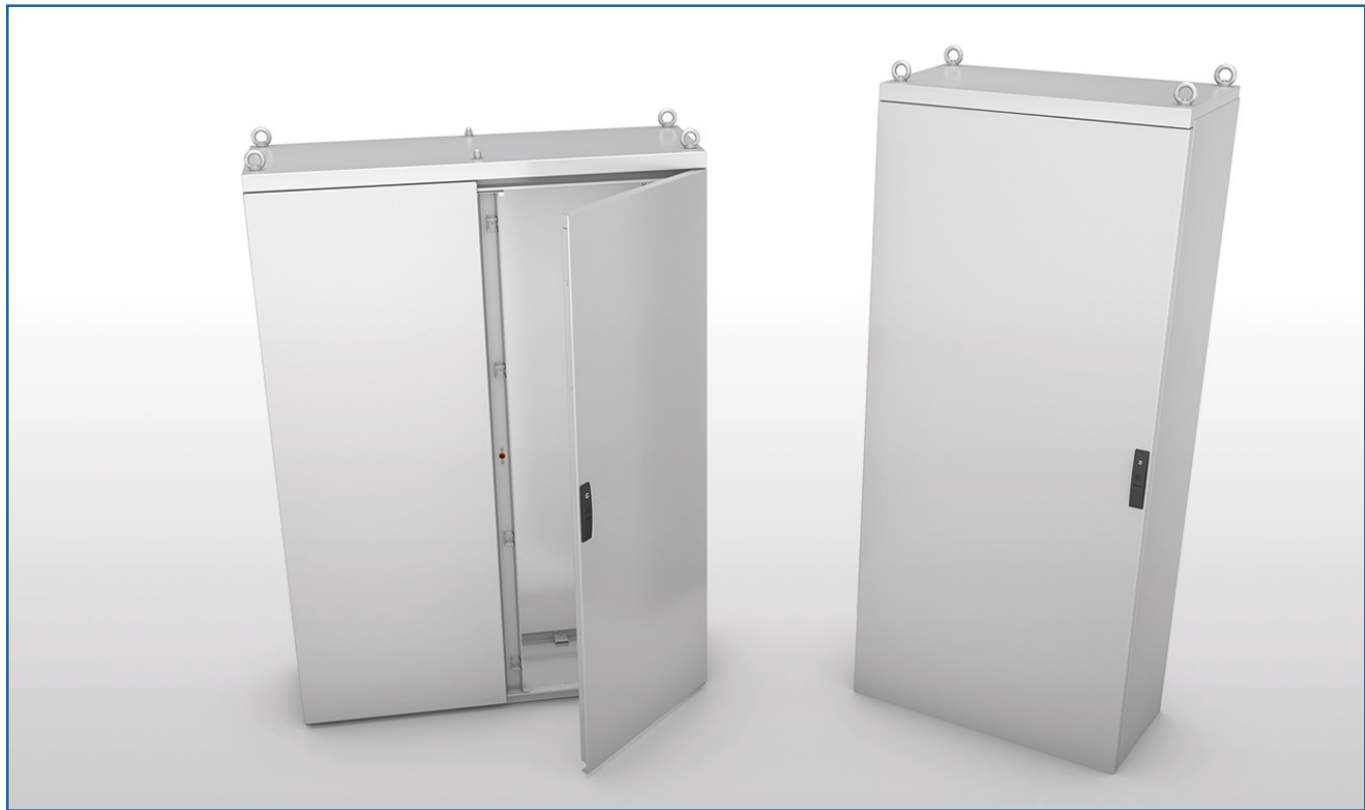


PRODUCT	PAG.
COMPACT CABINETS	
Compact cabinets CC	40
Accessories for compact cabinets CC	45

1

# COMPACT CABINETS



SKIRTING



OVERDOORS



DISTRIBUTION BOARDS

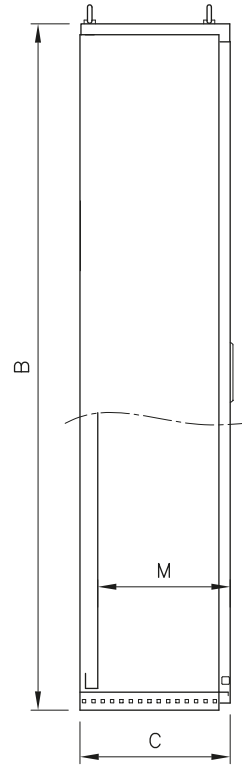
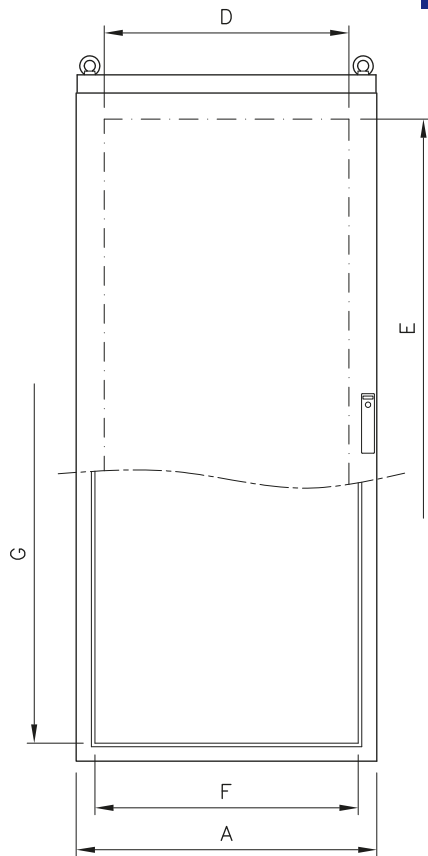


INNER DOORS

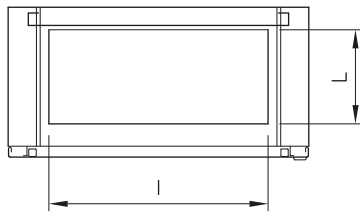




### COMPACT CABINETS SERIES CC

- Material: EN 1.4307 (TYPE 304L) s/s, finely satin-finished and protected, thickness 15/10 for the cabinet, 20/10 for the door.
- Envelope obtained from a single sheet, no rear access; top panel removable for easy cable entry from above and/or for the installation of conditioning systems. Shaping by multi-bending of the envelope front edge.
- Front door: full or glazed (shatterproof 3+3 laminate glass) with stiffening frame.
- On request, the full door can also be equipped with partial windows and other materials can be used (polycarbonate or aluminium for silk printing).
- Three different types of fairleads are available for the cabinet bottom: enbloc, multiple or sash type multiple, to be ordered separately (see accessories for cabinets).
- Twin-comb lock with outside faceplate made of glass-filled black polyamide, 4-point closing and Low Tension key. On request it can be replaced by different locks (see accessories for cabinets).
- TYPE 316 s/s inner hinges for 120° opening as per CEI EN 60204-1 recommendations.
- Hoisting eyebolt M12.
- Seal of foamed polyurethane.
- Sendzimir inner plate, to be ordered separately (see “accessories for cabinets”).
- Pre-arranged for earthing in compliance with the applicable regulations in force.
- Protection degree: IP66 in compliance with CEI EN 60529 (IP65 for 2-door cabinets).
- The cabinets can be made from other types of s/s and with different sizes and patterns to suit specific requirements.
- All the CC cabinets are equipped with RFID.



Module with single blind door

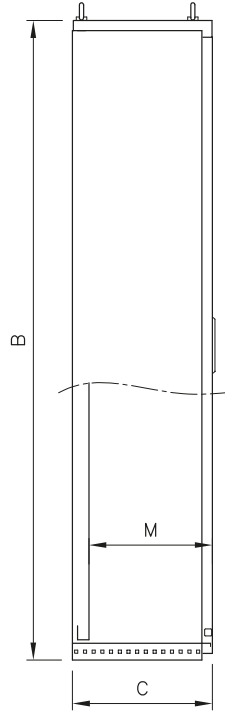
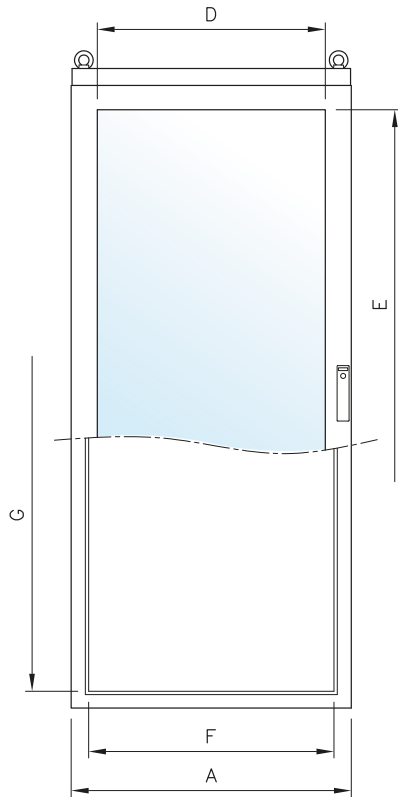


	IP66	EN 60 529
 US LISTED FILE N° E237618	TYPE NEMA 4X, 4, 12, 1	Standard UL508A - UL50 Standard 250
	IK10	EN 60204-1 89/392/EEC

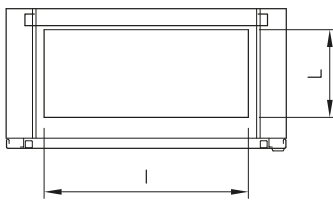
ITEM	OUTSIDE SIZES			CABINET							OPTIONALS		
	A	B	C	DOOR USEFUL SURFACE		FRAME INSIDE		CABLE WAY		M**	INNER PLATE		
				D	E	F	G	I	L		ITEM	X	Y
CC818	805	1840	400	655	1630	705	1712	590	250	340	PA0717	697	1692
CC1018	1005	1840	400	855	1630	905	1712	790	250	340	PA0917	897	1692

\*\* M = maximum useful depth with inner plate fitted  
UL certification to be requested with the order

# COMPACT CABINETS CC



Module with single glazed door

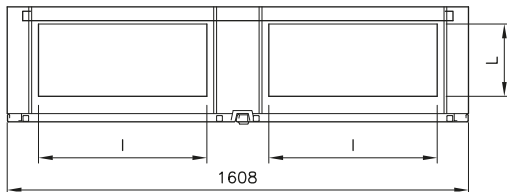
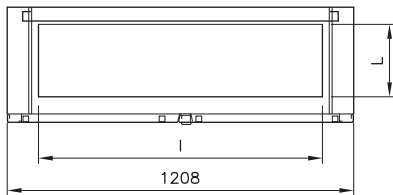
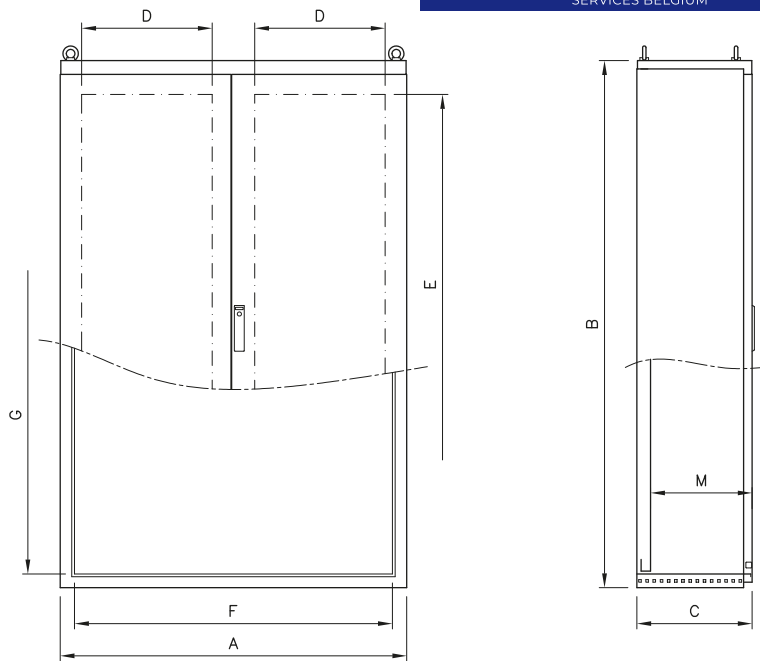




	<b>IP66</b>	EN 60 529
<b>UL</b> US LISTED FILE N° E237618	<b>TYPE NEMA 4X, 12, 1, 4</b>	Standard UL508A - UL50 Standard 250
		EN 60204-1 89/392/EEC

ITEM	CABINET										OPTIONALS		
	OUTSIDE SIZES			DOOR VISIBLE		FRAME INSIDE		CABLE WAY			INNER PLATE		
	A	B	C	D	E	F	G	I	L	M**	ITEM	X	Y
CCV818	805	1840	400	600	1600	705	1712	590	250	340	PA0717	697	1692
CCV1018	1005	1840	400	800	1600	905	1712	790	250	340	PA0917	897	1692

\*\* M = maximum useful depth with inner plate fitted  
UL certification to be requested with the order

Module with double blind door

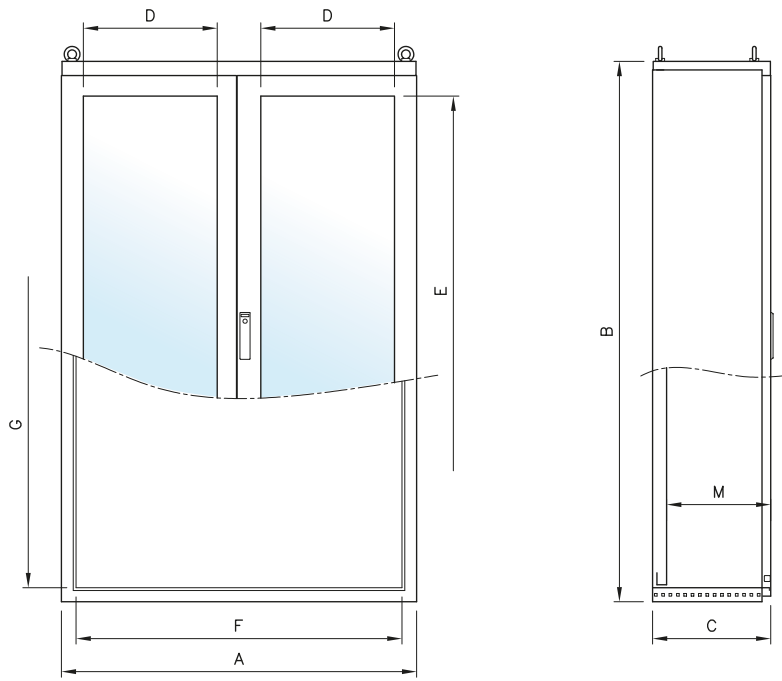


	<b>IP65</b>	EN 60 529
 <b>US LISTED</b> FILE N° E237618	<b>TYPE NEMA</b>	Standard UL508A - UL50 Standard 250
	<b>12, 1</b>	EN 60204-1 89/392/EEC

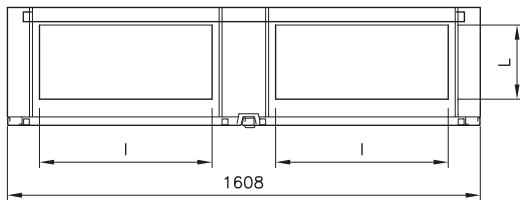
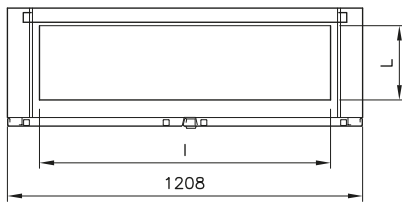
ITEM	CABINET										OPTIONALS		
	OUTSIDE SIZES			DOOR USEFUL SURFACE		FRAME INSIDE		CABLE WAY		M**	INNER PLATE		
	A	B	C	D	E	F	G	I	L		ITEM	X	Y
CC1216	1208	1640	400	455	1430	1108	1512	990	250	340	PA1115	1100	1492
CC1218	1208	1840	400	455	1630	1108	1712	990	250	340	PA1117	1100	1692
CC1616	1608	1640	400	655	1430	1508	1512	590	250	340	PA1515	1505	1492
CC1618	1608	1840	400	655	1630	1508	1712	590	250	340	PA1517	1505	1692



\*\* M = maximum useful depth with inner plate fitted  
UL certification to be requested with the order

# COMPACT CABINETS CC



Module with double glazed door



	<b>IP65</b>	EN 60 529
 <b>US LISTED</b> FILE N° E237618	<b>TYPE NEMA</b>	<b>12, 1</b>
		Standard UL508A - UL50 Standard 250 EN 60204-1 89/392/EEC

ITEM	CABINET										OPTIONALS		
	OUTSIDE SIZES			DOOR VISIBLE SURF.		FRAME INSIDE		CABLE WAY			INNER PLATE		
	A	B	C	D	E	F	G	I	L	M**	ITEM	X	Y
CCV1216	1208	1640	400	400	1400	1108	1512	990	250	340	PA1115	1100	1492
CCV1218	1208	1840	400	400	1600	1108	1712	990	250	340	PA1117	1100	1692
CCV1616	1608	1640	400	600	1400	1508	1512	590	250	340	PA1515	1505	1492
CCV1618	1608	1840	400	600	1600	1508	1712	590	250	340	PA1517	1505	1692

\*\* M = maximum useful depth with inner plate fitted  
UL certification to be requested with the order



### INNER DOORS

EN 1.4307 (TYPE 304L) execution, finely satin-finished and protected, thickness 20/10, they come in assembling kit and are used to assemble equipment inside the cabinets.

The gap between inner door and door is adjustable on two depth: 65 or 110mm. Can be hinged either on the right or the left side.

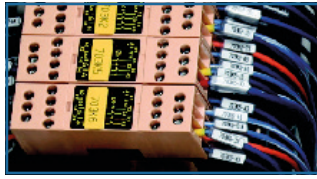
Maximum load admitted on the door 30Kg. Protection degree IP20 (IP54 on request). Drilling possible on request. For cabinets L.1200 and L.1600 use inner doors L.600 or L.800 adding the appropriate upright; in this case, it is recommended to not use the enbloc fairlead plate that is difficult to remove.

Central upright removable, to be use for installation of inner doors in cabinets L. 1200 and L. 1600.

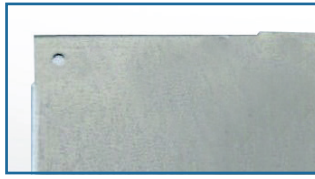
- **MCC16** - Central upright for cabinets CC height 1640
- **MCC18** - Central upright for cabinets CC height 1840

ITEM	SIZES		FOR CABINETS	
	L	H	WIDTH A	HEIGHT B
CP0616	490	1491	605	1640
CP0816	690	1491	805	1640
CP0618	490	1691	605	1840
CP0818	690	1691	805	1840
CP1018	890	1691	1005	1840

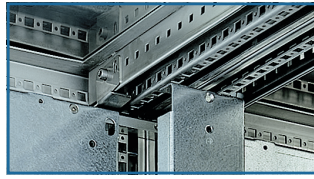
**SRS Cabling System**



**Inner Plates Type PA**



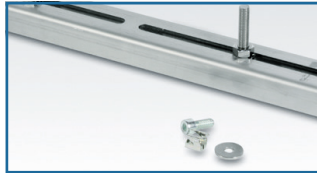
**Intermediate Plate**



**Slide Guides**



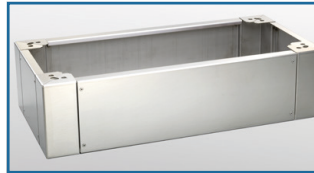
**Transformer Holding Section Bars**



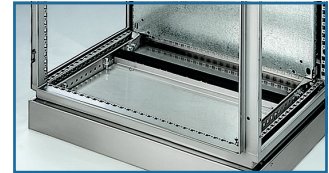
**Adjustable Feet**



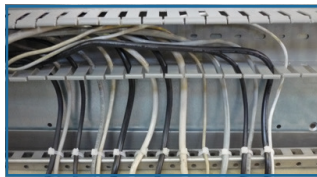
**Skirting**



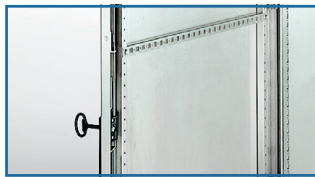
**Fairlead Plates**



**Cable Fixing Cross Members**



**Cross Members For Door**



**Work Tabletops**



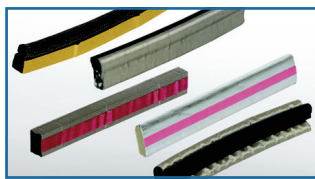
**Diagram Holding Pockets**



**Anti-Close Device**



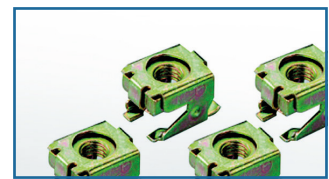
**Electroconductive Gaskets**



**Hoisting Eyebolts**



**Cage Nuts**



**Self-Tapping Screws 5,5**



**Lamps**



**Taps**



**Systems For Modular Switchgears**



IN THE SECTION "ACCESSORIES FOR SMALL CABINETS"

**Over-Doors**



**Cable Glands**



IN THE SECTION "AIR CONDITIONING"

**Air Conditioning**



**Ventilation**







